



OptoTech

ZM 50 CNC-TC

Centering Machine for Edging of
Spherical and Aspherical Lenses

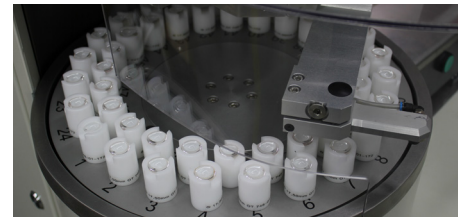


The ZM 50 CNC-TC is a simultaneously working edge processing machine in highest precision. The high quality software module allows even the production of complex edge geometries.

Smart Solutions for Professionals



Type	ZM 50 CNC-TC
Working Range	≤ 80 mm
CNC-Axis	5+1 (2xX, 2xZ, W, C-Axis on option)
Travel X-Axis	60 mm
Travel Z-Axis	50 mm
Feed Rate centering spindle 1 and 2 (upper+lower spindle)	5 - 250 mm/min
Tool spindle speed	100 - 5600 rpm
Tool spindle connection	Ø 20 H5 DIN 58742 Form H
Air Pressure Requirement	6 bar
Mass	approx. 1700 kg
Dimension (W x D x H):	1290 x 1305 x 1975 mm



- The ZM 50 CNC-TC is a high precision bell clamping centering machine in highest quality. Great care was taken to insure the mechanical stability and rigidity of the machine. For example the edging spindles are mounted in a torsion resistant cast iron "box" that defines the working area. This "box-in-box" system assures maximum accuracy. All linear axes are equipped with absolute scales, increasing the operation security significantly. Referencing the machine is not required any more. This also allows the automatic measurement of the centre thickness. Should the lens be out of specification, a warning signal comes up and the operator can decide on how to continue.
- New clamping technology: Clamping spindle (W-Axis) equipped with a new, electronic (servo) clamping force- and positioning control, which allows repeatable adjustment and regulation of very low clamping forces. The combination of new, innovative clamping spindle guides leads to maximum dampening and rigidity. Due to this, higher stock removal rates can be achieved and unwanted marks of the centering bells can be eliminated.
- The completely new designed software package „OptoEdge“ allows programming of complex edge geometries:
 - Programming of user-defined multi-step processing (multi-pass edging) with different edge geometries
 - User-defined combination of round- or form-processing
 - Free arrangement of the processing cycle sequences
 - New innovative laser centering software for high-precision alignment of low aperture lenses
- The ZM 50 CNC TwinCut is equipped with two tool spindles operating parallel. Edging is much faster and more efficient compared to single tool operations, which are also possible. While edging from both sides, forces in the X-direction are nearly equal, thus enabling faster feed rates and resulting in shorter cycle times.
- All standard clamping chucks with HD12 connection can be used.

Options:

- Laser centering device for transmission and reflection
- C-Axis package for truncations, profiling etc.
- Camera for monitoring pre-profiled workpieces while loading
- Automatic handling with disk magazine

OptoTech Optikmaschinen GmbH

Sandusweg 2-4
 35435 Wettenberg / Germany
 Tel.: +49 (0)641/98203-0
 Fax.: +49 (0)641/98203-900
 Email: info.de@optotech.net
 Web: www.optotech.net

Date: 05-20-2020, subject to change