



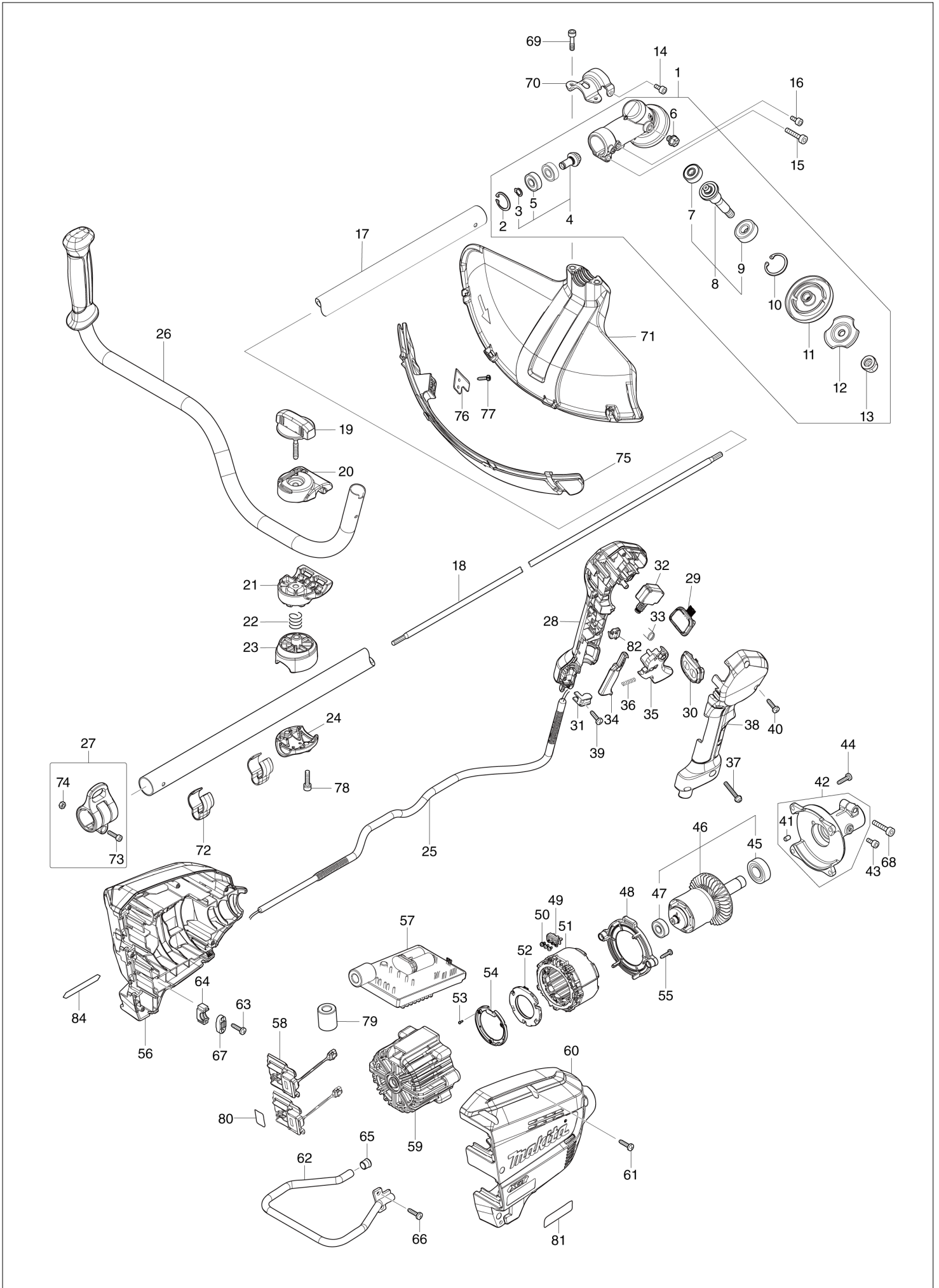
VN	VIETNAM
----	---------

Diagram / Parts List

UR012G

CORDLESS GRASS TRIMMER

(VN) UR012G / CORDLESS GRASS TRIMMER



VN	VIETNAM
-----------	----------------

UR012G / CORDLESS GRASS TRIMMER

Item	Sub	Parts No.	Parts Description	Qty	I/C	E/C No.	Close No.	Remark
001		127238-3	GEAR CASE ASSEMBLY G	1				
	D10		INC. 2,4,6,8,10-13					
002		257470-6	RETAINING RING (INT) R-26	1				
003		257471-4	RETAINING RING (EXT) S-10	1				
004		136564-9	SPIRAL BEVEL GEAR 13 ASS'Y	1				
	D10		INC. 3,5					
005		210067-2	BALL BEARING 6000ZZ	2				
006		265590-2	+HEX.BOLT M8X10 WITH R	1				
007		210084-2	BALL BEARING 629ZZ	1				
008		136565-7	CUTTER SHAFT G ASS'Y	1				
	D10		INC. 7,9					
009		211137-0	BALL BEARING 6201LLU	1				
010		257469-1	RETAINING RING (INT) R-32	1				
011		140J59-6	RECEIVE WASHER COMPLETE G	1				
012		162567-7	CLAMP WASHER COMPLETE G	1				
013		252236-9	HEX. LOCK NUT M10-17	1				
014		922211-6	H.S.H.BOLT M5X12 WITH W	1				
015		922353-6	HEX.SOCKET HEAD BOLT M6X30	1				
016		922211-6	H.S.H.BOLT M5X12 WITH W	1				
017		141D74-7	SHAFT PIPE COMPLETE A	1				
	C10	819312-8	MAKITA LOGO LABEL	1				
	C20	8040V7-0	CAUTION LABEL	1				
018		327845-4	SHAFT	1				
019		168796-0	KNOB 57	1				
020		144313-0	UPPER HANDLE HOLDER COMPLETE	1				
	C10	263005-3	RUBBER PIN 6	1				
021		319517-5	LOWER HANDLE HOLDER	1				
022		233309-7	COMPRESSION SPRING 17	1				
023		319799-9	PIPE HOLDER	1				
024		318422-3	PIPE CLAMP	1				
025		699170-6	POWER SUPPLY CORD UNIT	1				
026		140J61-9	HANDLE 22 COMPLETE	1				
	C10	273014-4	GRIP 36	1				
027		125558-9	HANGER ASSEMBLY	1				
	D10		INC. 73,74					
028		183T68-2	GRIP SET	1				
	C10	252180-0	HEX. LOCK NUT M5-8	1				
	D10		INC. 38					
029		141D26-8	INDICATION CIRCUIT COMPLETE G	1				
030		140W06-5	SWITCH CIRCUIT COMPLETE G	1				
	C10	819J26-9	SWITCH LABEL	1				
031		687260-7	STRAIN RELIEF	1				
032		651492-2	SWITCH C3JR-1A-PAXD3	1				
033		233540-5	TORSION SPRING 11	1				
034		459146-3	LOCK OFF LEVER	1				
035		459145-5	SWITCH LEVER	1				
036		233101-1	COMPRESSION SPRING 4	1				
037		911258-5	PAN HEAD SCREW M5X35	1				
038		183T68-2	GRIP SET	1				
	C10	252180-0	HEX. LOCK NUT M5-8	1				
	D10		INC. 28					
039		266326-2	TAPPING SCREW 4X18	1				
040		266326-2	TAPPING SCREW 4X18	5				
041		263005-3	RUBBER PIN 6	1				
042		136465-1	PIPE BRACKET ASSEMBLY	1				
	D10		INC. 41					
043		922211-6	H.S.H.BOLT M5X12 WITH W	1				
044		266420-0	TAPPING SCREW 5X20	4				
045		211275-8	BALL BEARING 6003DDW	1				
046		519560-6	ROTOR ASS'Y	1				
	D10		IMC. 45,47					
047		210059-1	BALL BEARING 6000DDW	1				
048		459144-7	BAFFLE PLATE	1				
049		632T09-0	LEAD UNIT	1				
050		652031-1	PAN HEAD SCREW M3X6	3				

Interchange
O : Yes
X : No
< : the new part can be substituted for the current.
> : the current part can be substituted for the new.
S : Interchangeable as a set.

