



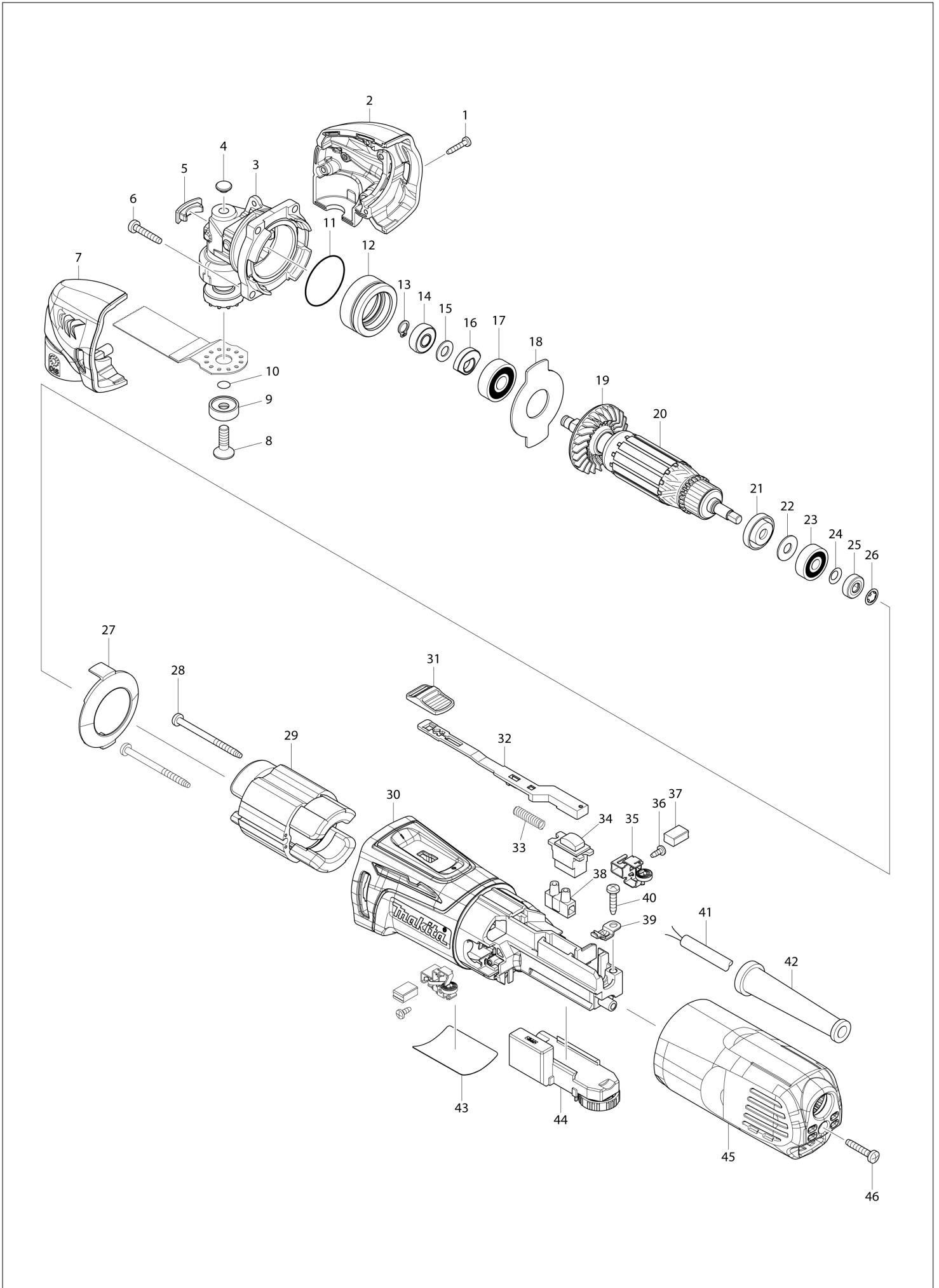
VN	VIETNAM
----	---------

# Diagram / Parts List

**TM3000C**  
**MULTI TOOL**



(VN) TM3000C / MULTI TOOL



<b>VN</b>	<b>VIETNAM</b>
-----------	----------------

### TM3000C / MULTI TOOL

Item	Sub	Parts No.	Parts Description	Qty	I/C	E/C No.	Close No.	Remark
001		266429-2	TAPPING SCREW 3X16	3				
002		187373-9	HEAD COVER SET	1				
	D10		INC. 7					
003A		141640-6	CRANK HOUSING COMPLETE	1			97550	
003-1A		142075-4	CRANK HOUSING COMPLETE	1	<	97550	A0413	
003-1B		142075-4	CRANK HOUSING COMPLETE	1			A0413	
003-2		142399-8	CRANK HOUSING COMPLETE	1	<	A0413		
004		424511-5	CRANK HOUSING CAP B	1				
005		424510-7	CRANK HOUSING CAP A	1				
006		266424-2	TAPPING SCREW 4X20	4				
007		187373-9	HEAD COVER SET	1				
	D10		INC. 2					
008		266783-4	HEX.SOCKET C.S.H.SCREW M6X20	1			C5179	
008-1		265674-6	HEX. SOKCET HEAD BOLT M6X14	1	S	C5179		
009		224455-7	OUTER FLANGE 22	1			C5179	
010		213021-5	O RING 5	1			C5179	
011		213479-8	O RING 33	1				
012		326199-6	BEARING BOX	1				
013		961003-8	RETAINING RING S-7	1				
014		211392-4	SPHERE BEARING 706	1				
015		253133-2	FLAT WASHER 7	1				
016		313245-4	BALANCER	1				
017		211092-6	BALL BEARING 629DDW	1				
018		285857-2	BEARING RETAINNER	1				
019		240140-4	FAN 46	1				
020		517683-4	ARMATURE ASSEMBLY 220-240V	1				
	D10		INC. 19,21-26					
021		681636-0	INSULATION WASHER	1				
022		267426-1	FLAT WASHER 7	1				
023		210023-2	BALL BEARING 627DDW	1				
024		267756-0	WAVE WASHER 6	1				
025		688174-3	MAGNET SLEEVE	1			B9765	
025-1		688117-5	MAGNET SLEEVE	1	O	B9765		
026		259039-2	SELF LOCK 6	1				
027		453828-9	BAFFLE PLATE	1				
028		266415-3	TAPPING SCREW 4X55	2				
029		623558-8	FIELD 220-240V	1				
030		453823-9	MOTOR HOUSING	1				
031		453761-5	SWITCH KNOB	1				
032		453825-5	SWITCH LEVER	1				
033		234263-8	COMPRESSION SPRING 5	1				
034		651609-7	SWITCH SS106A-7-1	1				
035		643839-4	BRUSH HOLDER 6X9	2				
036		266492-5	TAPPING SCREW 3X8	2				
037		195026-6	CARBON BRUSH SET CB-459	1				
038		654532-5	TERMINAL BLOCK 1P	1				
039		687682-1	STRAIN RELIEF	1				
040		266326-2	TAPPING SCREW 4X18	1				
041		691025-1	POWER SUPPLY CORD 0.75-2-5.0	1				
042		682504-0	CORD GUARD 10-85	1				
043		897303-9	TM3000C NAME PLATE	1				
044		620149-6	CONTROLLER	1				
045		453824-7	REAR COVER	1				
046		266424-2	TAPPING SCREW 4X20	1				
A01		410047-0	WRENCH HOLDER 5.6	1				
A02		783203-8	HEX. WRENCH 5	1				
A03A		196057-8	TOOL SET M	1			Y06234	
A04A		821537-2	PLASTIC CARRYING CASE	1			A0133	
	C10	162315-4	LATCH	2			A0133	
	C20	452137-3	HANDLE	1			A0133	
A04-1A		821596-6	PLASTIC CARRYING CASE	1	<	A0133		
	C10	162315-4	LATCH	2		A0133		
	C20	452137-3	HANDLE	1		A0133		
A05A		800F14-3	TM3000CX3 PLASTIC CASE LABEL	2				
A06A		196022-7	DUST ATTACHMENT SET	1			C6632	

A:TM3000CX3(H)  
B:TM3000C(H)

Interchange  
O : Yes  
X : No  
< : the new part can be substituted for the current.  
> : the current part can be substituted for the new.  
S : Interchangeable as a set.

**TM3000C / MULTI TOOL**

Item	Sub	Parts No.	Parts Description	Qty	I/C	E/C No.	Close No.	Remark
	C10	443177-2	FELT RING 37	1			C6632	
	C20	453829-7	DUST ATTACHMENT	1			C6632	
	C30	453832-8	JOINT	1			C6632	
	C40	453834-4	DUST NOZZLE A	1			C6632	
	C50	453835-2	NOZZLE BAND A	1			C6632	
A06-1A		199618-3	DUST ATTACHMENT SET	1	<	C6632		
	C10	443177-2	FELT RING 37	1		C6632		
	C20	453829-7	DUST ATTACHMENT	1		C6632		
	C30	453832-8	JOINT	1		C6632		
	C40	453834-4	DUST NOZZLE A	1		C6632		
	C50	453835-2	NOZZLE BAND A	1		C6632		
	C60	422362-0	FELT RING 47	1		C6632		
	C70	459362-7	SPACER	1		C6632		
A07A		196272-4	ADAPTER A SET	1		Y06234	C4114	
A07-1A		196271-6	ADAPTER A SET	1	<	C4114	C5794	
A08A		B-21325	SEGMENT SAW BLADE 85 TMA006	1		Y06234	98331	
A08-1A		B-21325	SEGMENT SAW BLADE 85 TMA006	1	O	98331	C5794	
A08-2A		B-64799	STARLOCK SEGMENTSAW 85 TMA045	1	O	C5794		
A09A		B-21331	SEGMENT SAW BLADE 85 TMA007	1		Y06234	98331	
A09-1A		B-21331	SEGMENT SAW BLADE 85 TMA007	1	O	98331	C5794	
A09-2A		B-64836	STARLOCK SEGMENTSAW 85 TMA049	1	O	C5794		
A10A		B-21353	PLUNGE CUT SAW BLADE 28 TMA009	1		Y06234	98331	
A10-1A		B-21353	PLUNGE CUT SAW BLADE 28 TMA009	1	O	98331	C5794	
A10-2A		B-64814	STARLOCK CUTSAW 32 TMA047 BIM	1	O	C5794		
A11A		B-21369	PLUNGE CUT SAW BLADE 32 TMA010	1		Y06234	98331	
A11-1A		B-21369	PLUNGE CUT SAW BLADE 32 TMA010	1	O	98331	C5794	
A11-2A		B-64870	STARLOCK CUTSAW 32 TMA053 BIM	1	O	C5794		
A12A		B-21381	PLUNGE CUT SAW BLADE 32 TMA012	1		Y06234	98331	
A12-1A		B-21381	PLUNGE CUT SAW BLADE 32 TMA012	1	O	98331	C5794	
A12-2A		B-64858	STARLOCK CUTSAW 32 TMA051 HCS	1	O	C5794		
A13A		B-21428	PLUNGE CUT SAW BLADE 20 TMA016	1		Y06234	98331	
A13-1A		B-21428	PLUNGE CUT SAW BLADE 20 TMA016	1	O	98331	C5794	
A13-2A		B-64923	STARLOCK CUTSAW 20 TMA058 BIM	1	O	C5794	D8846	
A13-3A		B-64923	STARLOCK CUTSAW 20 TMA058 BIM	1	O	D8846		
A14A		B-21434	PLUNGE CUT SAW BLADE 10 TMA017	1		Y06234	98331	
A14-1A		B-21434	PLUNGE CUT SAW BLADE 10 TMA017	1	O	98331	C5794	
A14-2A		B-64917	STARLOCK CUTSAW 10 TMA057 BIM	1	O	C5794	D8846	
A14-3A		B-64917	STARLOCK CUTSAW 10 TMA057 BIM	1	O	D8846		
A15A		B-21456	SCRAPER 52 FLEXIBLE TMA019	1		Y06234	98331	
A15-1A		B-21456	SCRAPER 52 FLEXIBLE TMA019	1	O	98331	C5794	
A15-2A		B-64995	STARLOCK SCRAPERFLEXIBLE TMA66	1	O	C5794		
A16A		B-21490	HM SEG SAW BLADE 85 TMA023	1		Y06234	98331	
A16-1A		B-21490	HM SEG SAW BLADE 85 TMA023	1	O	98331	C5794	
A16-2A		B-65028	STARLOCK SEGMENTSAW 85 TMA069	1	O	C5794		
A17A		B-21509	HM SEG SAW BLADE 65 TMA024	1		Y06234	98331	
A17-1A		B-21509	HM SEG SAW BLADE 65 TMA024	1	O	98331	C5794	
A17-2A		B-65040	STARLOCK SEGMENTSAW 70 TMA071	1	O	C5794		
A18A		B-21624	ABRASIVEPAPER DELTA RED 60	1		Y06234	D9125	
A18-1A		D-58584	ABRASIVE DELTA PAPER 60	1	O	D9125		
A19A		B-22947	ABRASIVEPAPER DELTA RED 100	1		Y06234	D9125	
A19-1A		D-58609	ABRASIVE DELTA PAPER 100	1	O	D9125		
A20A		B-22953	ABRASIVEPAPER DELTA RED 150	1		Y06234	D9125	
A20-1A		D-58621	ABRASIVE DELTA PAPER 150	1	O	D9125		
A21A		B-21537	SANDING PAD	1		Y06234	Y07812	
A21-1A		B-46202	SANDING PAD	1	<	Y07812	C5794	
A21-2A		B-65115	STARLOCK SANDING PAD 93 TMA078	1	O	C5794		
A22A		821538-0	TOOL BOX	1		Y06234		

A:TM3000CX3(H)  
B:TM3000C(H)Interchange  
O : Yes  
X : No  
< : the new part can be substituted for the current.  
> : the current part can be substituted for the new.  
S : Interchangeable as a set.