



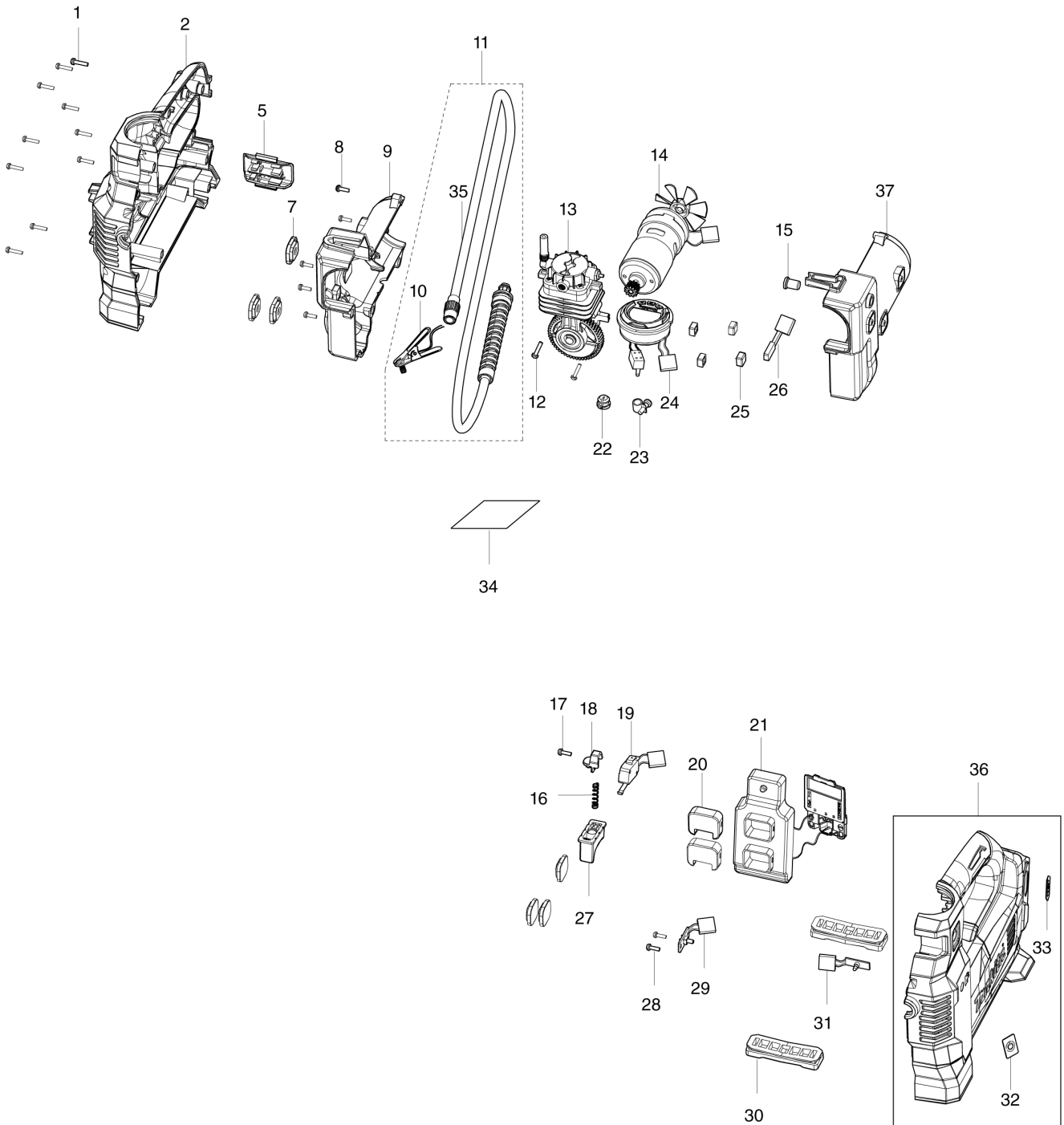
VN	VIETNAM
----	---------

Diagram / Parts List

MP001G

CORDLESS INFLATOR

(VN) MP001G / CORDLESS INFLATOR



MP001G / CORDLESS INFLATOR

Item	Sub	Parts No.	Parts Description	Qty	I/C	E/C No.	Close No.	Remark
001		TE00000028	TAPPING SCREW 3X14	10				
002		TE00000591	HOUSING SET	1				
	D10		INC. 32,33,36				Y08718	
	D11		INC. 36			Y08718		
005		TE00000593	FIXED BRACKET	1				
007		TE00000595	INNER PAD	6				
008		TE00000029	TAPPING SCREW 3X10	5				
009		TE00000596	INNER HOUSING SET	1				
	D10		INC. 37					
010		TE00000597	BRITISH ADAPTER	1				
011		TE00000598	HOSE ASSEMBLY	1				
	D10		INC. 10					
012		TE00000624	SCREW 4X6	2				
013		TE00000625	CYLINDER COMPLETE	1				
014		TE00000599	MOTOR ASSEMBLY	1				
015		TE00000600	RELEASE VALVE BUTTON	1				
016		TE00000330	SPRING	1				
017		TE00000029	TAPPING SCREW 3X10	1				
018		TE00000328	TRIGGER SPRING-FIXED BLOCK	1				
019		TE00000601	BUTTON	1				
020		TE00000602	PLATE	2				
021		TE00000603	CONTROLLER ASSY	1				
022		TE00000604	PLUG	1				
023		TE00000352	CLAMP	1				
024		TE00000605	DIGITAL DISPLAY	1				
025		TE00000606	PAD	4				
026		TE00000607	THERMAL PROTECTOR	1				
027		TE00000485	SWITCH	1				
028		TE00000029	TAPPING SCREW 3X10	2				
029		TE00000608	POWER SWITCH	1				
030		TE00000609	MAT	2				
031		TE00000610	LED CIRCUIT	1				
032		TE00000426	SWITCH LABEL	1				
033		TE00000611	XGT LABEL	1				
034		TE00000612	NAME PLATE	1				
036		TE00000591	HOUSING SET	1				
	D10		INC. 2,32,33				Y08718	
	D11		INC. 2			Y08718		
037		TE00000596	INNER HOUSING SET	1				
	D10		INC. 9					
A01		TE00000592	BALL ADAPTER	1				
A02		TE00000333	SWIM RING ADAPTER	1				
A03		TE00000594	FRENCH ADAPTER	1				

Interchange
 O : Yes
 X : No
 < : the new part can be substituted for the current.
 > : the current part can be substituted for the new.
 S : Interchangeable as a set.