



| | |
|----|---------|
| VN | VIETNAM |
|----|---------|

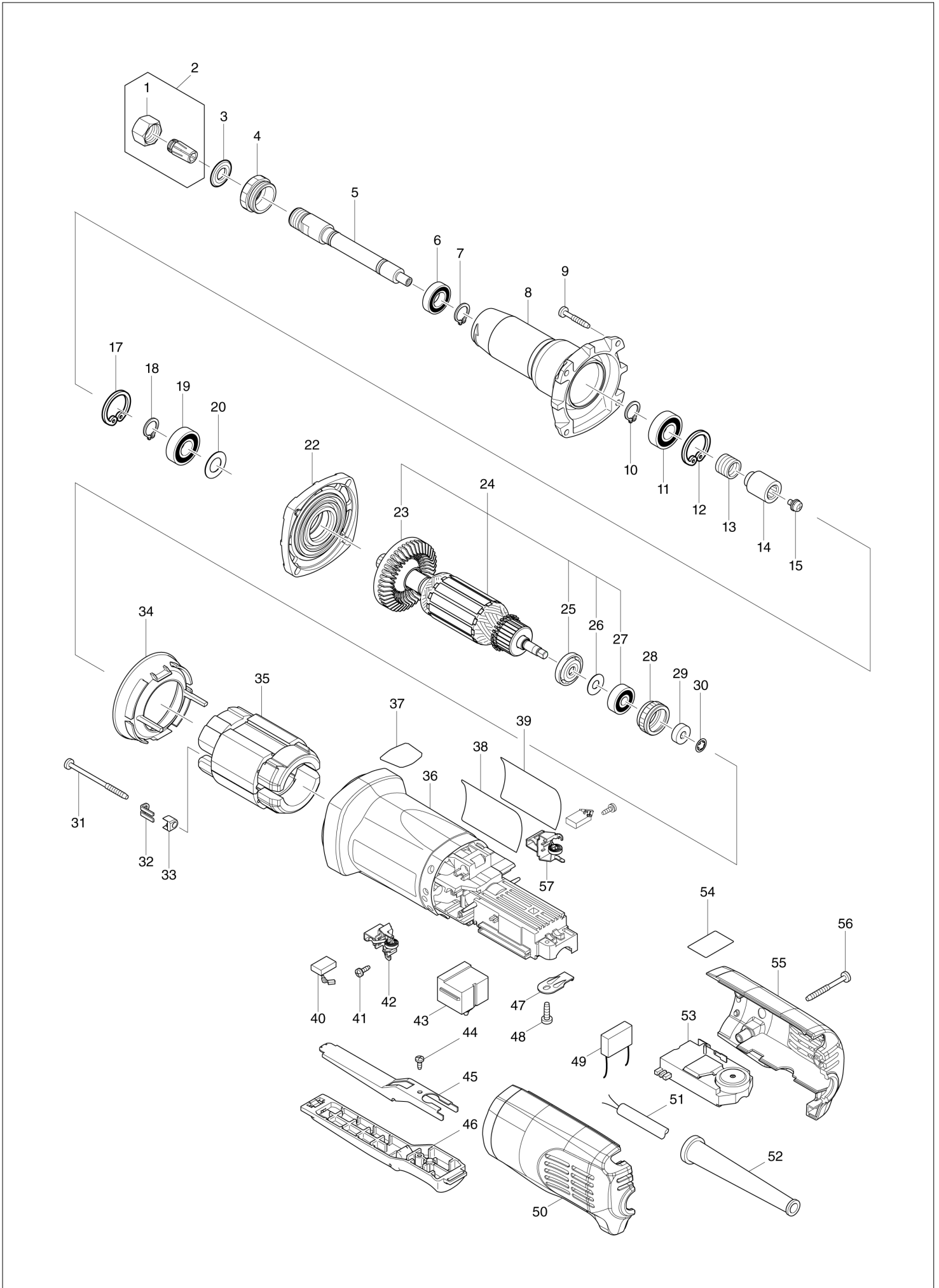
Diagram / Parts List

GD0801C

DIE GRINDER



(VN) GD0801C / DIE GRINDER



| | |
|-----------|----------------|
| VN | VIETNAM |
|-----------|----------------|

GD0801C / DIE GRINDER

| Item | Sub | Parts No. | Parts Description | Qty | I/C | E/C No. | Close No. | Remark |
|-------|-----|-----------|------------------------------|-----|-----|---------|-----------|--------|
| 001 | | 763645-2 | COLLET NUT | 1 | | | | |
| 002 | | 763646-0 | COLLET CONE 6 | 1 | | | Y06948 | |
| 002-1 | | 193012-1 | COLLET CONE 6 SET | 1 | < | Y06948 | | |
| | C10 | 763646-0 | COLLET CONE 6 | 1 | | Y06948 | | |
| | D10 | | INC. 1 | | | Y06948 | | |
| 003 | | 213209-7 | OIL SEAL 16 | 1 | | | | |
| 004 | | 285700-5 | BEARING RETAINER | 1 | | | | |
| 005 | | 324042-3 | SPINDLE | 1 | | | | |
| 006 | | 211141-9 | BALL BEARING 6901LLB | 1 | | | | |
| 007 | | 961052-5 | RETAINING RING S-12 | 1 | | | | |
| 008 | | 317368-0 | BARREL | 1 | | | | |
| 009 | | 265999-8 | TAPPING SCREW 4X25 | 4 | | | | |
| 010 | | 961052-5 | RETAINING RING S-12 | 1 | | | | |
| 011 | | 211148-5 | BALL BEARING 6001ZZ | 1 | | | | |
| 012 | | 962106-1 | RETAINING RING R-28 | 1 | | | | |
| 013 | | 233901-9 | LOCK SPRING 12 | 1 | | | | |
| 014 | | 323989-8 | COUPLING | 1 | | | | |
| 015 | | 265082-1 | PAN HEAD SCREW M4X8 | 1 | | | | |
| 017 | | 962106-1 | RETAINING RING R-28 | 1 | | | | |
| 018 | | 961052-5 | RETAINING RING S-12 | 1 | | | | |
| 019 | | 211148-5 | BALL BEARING 6001ZZ | 1 | | | | |
| 020 | | 253084-9 | FLAT WASHER 12 | 1 | | | | |
| 022 | | 317367-2 | BEARING BOX | 1 | | | | |
| 023 | | 240036-9 | FAN 57 | 1 | | | | |
| 024 | | 515408-0 | ARMATURE ASS'Y 220V | 1 | | | B2457 | |
| | D10 | | INC. 23,25-27 | | | | B2457 | |
| 024-1 | | 510305-5 | ARMATURE ASS'Y 220V | 1 | O | B2457 | | |
| | D10 | | INC. 23,25-27 | | | B2457 | | |
| 025 | | 681656-4 | INSULATION WASHER | 1 | | | | |
| 026 | | 253823-7 | FLAT WASHER 7 | 1 | | | | |
| 027 | | 210023-2 | BALL BEARING 627DDW | 1 | | | B2457 | |
| 027-1 | | 210045-2 | BALL BEARING 627DDW | 1 | O | B2457 | | |
| 028 | | 421770-2 | LABYRINTH RUBBER RING 22 | 1 | | | | |
| 029 | | 688117-5 | MAGNET SLEEVE | 1 | | | | |
| 030 | | 259039-2 | SELF LOCK 6 | 1 | | | | |
| 031 | | 266259-1 | TAPPING SCREW 4X60 | 2 | | | | |
| 032 | | 344871-8 | RETAINER | 2 | | | | |
| 033 | | 417237-6 | INSULATION COVER | 2 | | | | |
| 034 | | 455367-5 | BAFFLE PLATE | 1 | | | | |
| 035 | | 626668-0 | FIELD 220V | 1 | | | | |
| 036 | | 455358-6 | MOTOR HOUSING | 1 | | | | |
| 037 | | 813900-3 | SJS MARK LABEL | 1 | | | | |
| 038 | | 850F20-8 | GD0801C NAME PLATE | 1 | | | | |
| 040 | | 194999-0 | A.C. CARBON BRUSH SET CB-318 | 1 | | | | |
| 041 | | 266256-7 | TAPPING SCREW PT3X10 | 4 | | | | |
| 042 | | 643760-7 | BRUSH HOLDER | 1 | | | | |
| 043 | | 650579-7 | SWITCH 1246.3223 | 1 | | | | |
| 044 | | 265954-0 | TAPPING SCREW BIND PT3X8 | 1 | | | | |
| 045 | | 345504-8 | PLATE | 1 | | | | |
| 046 | | 154584-1 | SWITCH LEVER B COMPLETE | 1 | | | | |
| 047 | | 687169-3 | STRAIN RELIEF | 1 | | | | |
| 048 | | 266385-6 | TAPPING SCREW 4X14 | 1 | | | | |
| 050 | | 188365-1 | REAR COVER SET | 1 | | | DB563 | |
| | D10 | | INC. 55 | | | | DB563 | |
| 050-1 | | 183U29-8 | REAR COVER SET | 1 | < | DB563 | | |
| | D10 | | INC. 55 | | | DB563 | | |
| 051 | | 691015-4 | POWER SUPPLY CORD 0.75-2-2.5 | 1 | | | | |
| 052 | | 682566-8 | CORD GUARD 10 | 1 | | | | |
| 053 | | 620338-3 | CONTROLLER | 1 | | | | |
| 054 | | 804Y15-7 | INDICATION LABEL | 1 | | | | |
| 055 | | 188365-1 | REAR COVER SET | 1 | | | DB563 | |
| | D10 | | INC. 50 | | | | DB563 | |
| 055-1 | | 183U29-8 | REAR COVER SET | 1 | < | DB563 | | |
| | D10 | | INC. 50 | | | DB563 | | |
| 056 | | 266048-4 | TAPPING SCREW 4X40 | 3 | | | | |

Interchange
O : Yes
X : No
< : the new part can be substituted for the current.
> : the current part can be substituted for the new.
S : Interchangeable as a set.

