



VN	VIETNAM
----	---------

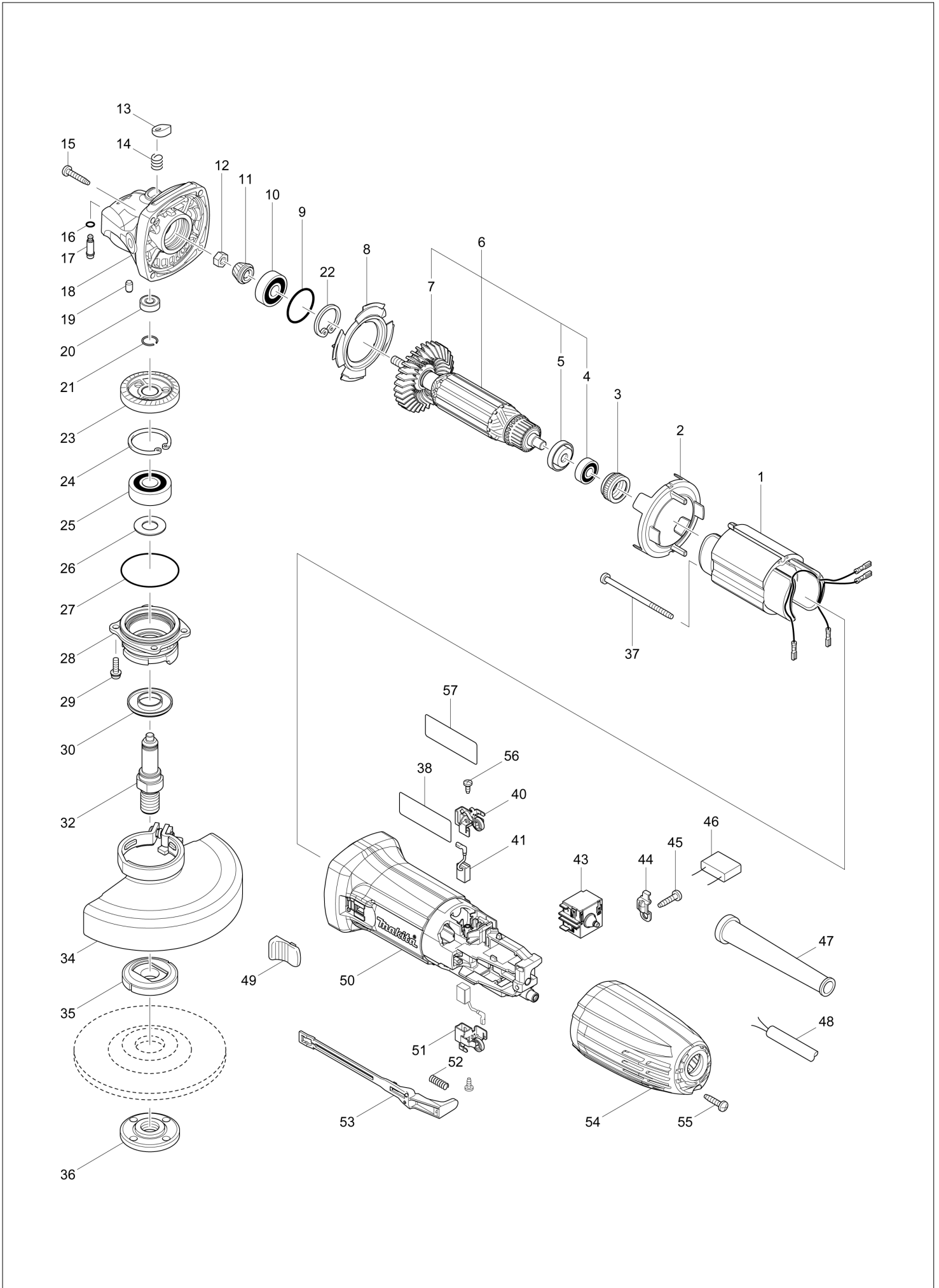
Diagram / Parts List

GA5030R

125MM ANGLE GRINDER



(VN) GA5030R / 125MM ANGLE GRINDER



VN	VIETNAM
-----------	----------------

GA5030R / 125MM ANGLE GRINDER

Item	Sub	Parts No.	Parts Description	Qty	I/C	E/C No.	Close No.	Remark
001		633903-9	FIELD 220-240V	1				
002		450796-7	BAFFLE PLATE	1				
003		421868-5	LABYRINTH RUBBER RING 19	1				
004		210034-7	BALL BEARING 607LLB	1				
005		681636-0	INSULATION WASHER	1				
006		517648-6	ARMATURE ASS'Y 220V	1				
	D10		INC. 4,5,7					
007		240139-9	FAN 56	1				
008		413126-3	GUIDE PLATE	1				
009		213445-5	O-RING 26	1				
010		211092-6	BALL BEARING 629DDW	1				
011		227545-5	SPIRAL BEVEL GEAR 10	1				
012		252186-8	HEX. NUT M6	1				
013		417771-6	PIN CAP	1				
014		234057-1	COMPRESSION SPRING 8	1				
015		266324-6	TAPPING SCREW 4X22	4				
016		213032-0	O RING 4	1				
017		256510-7	SHOULDER PIN 4	1				
018		318335-8	GEAR HOUSING	1				
019		263002-9	RUBBER PIN 4	1				
020		210033-9	BALL BEARING 696ZZ	1				
021		233950-6	RING SPRING 11	1				
022		962105-3	RETAINING RING R-26	1				
023		227546-3	SPIRAL BEVEL GEAR 37	1				
024		962151-6	RETAINING RING R-32	1				
025		211129-9	BALL BEARING 6201DDW	1				
026		267113-2	FLAT WASHER 12	1			D7262	
026-1		267238-2	FLAT WASHER 12	1	O	D7262		
027		213561-3	O RING 42	1				
028		318336-6	BEARING BOX	1				
029		265099-4	PAN HEAD SCREW M4X14	4				
030		345464-4	LABYRINTH RING	1				
032		324954-0	SPINDLE	1				
034		123099-9	WHEEL COVER 125AK ASSEMBLY	1				
	C10	213009-5	O RING 4	1				
	C20	265180-1	PAN HEAD SCREW M5X16	1				
035		224415-9	INNER FLANGE 42	1			B6709	
035-1		224490-5	INNER FLANGE 14-45	1	O	B6709		
036		224554-5	LOCK NUT 14-45	1				
037		266325-4	TAPPING SCREW 4X70	2				
038		851S94-0	GA5030R NAME PLATE	1				
040		643839-4	BRUSH HOLDER 6X9	1				
041		195026-6	CARBON BRUSH SET CB-459	1				
043		650769-2	SWITCH	1				
044		687682-1	STRAIN RELIEF	1				
045		266326-2	TAPPING SCREW 4X18	1				
047		682566-8	CORD GUARD 10	1				
048		691015-4	POWER SUPPLY CORD 0.75-2-2.5	1				
049		418016-5	SWITCH KNOB	1				
050		456380-6	MOTOR HOUSING	1				
051		643839-4	BRUSH HOLDER 6X9	1				
052		233121-5	COMPRESSION SPRING 4	1				
053		450797-5	SWITCH LEVER	1				
054		456381-4	REAR COVER	1			DA355	
054-1		413A35-2	REAR COVER	1	<	DA355		
055		266326-2	TAPPING SCREW 4X18	1				
056		266492-5	TAPPING SCREW 3X8	2				
057		891976-0	CLEAR LABEL	1				
A01		153504-2	GRIP 36 COMPLETE	1				
A02		782423-1	LOCK NUT WRENCH 35	1				
A04		A-80656	GRINDING WHEEL 125 WA36N	1				

Interchange
O : Yes
X : No
< : the new part can be substituted for the current.
> : the current part can be substituted for the new.
S : Interchangeable as a set.