



VN	VIETNAM
----	---------

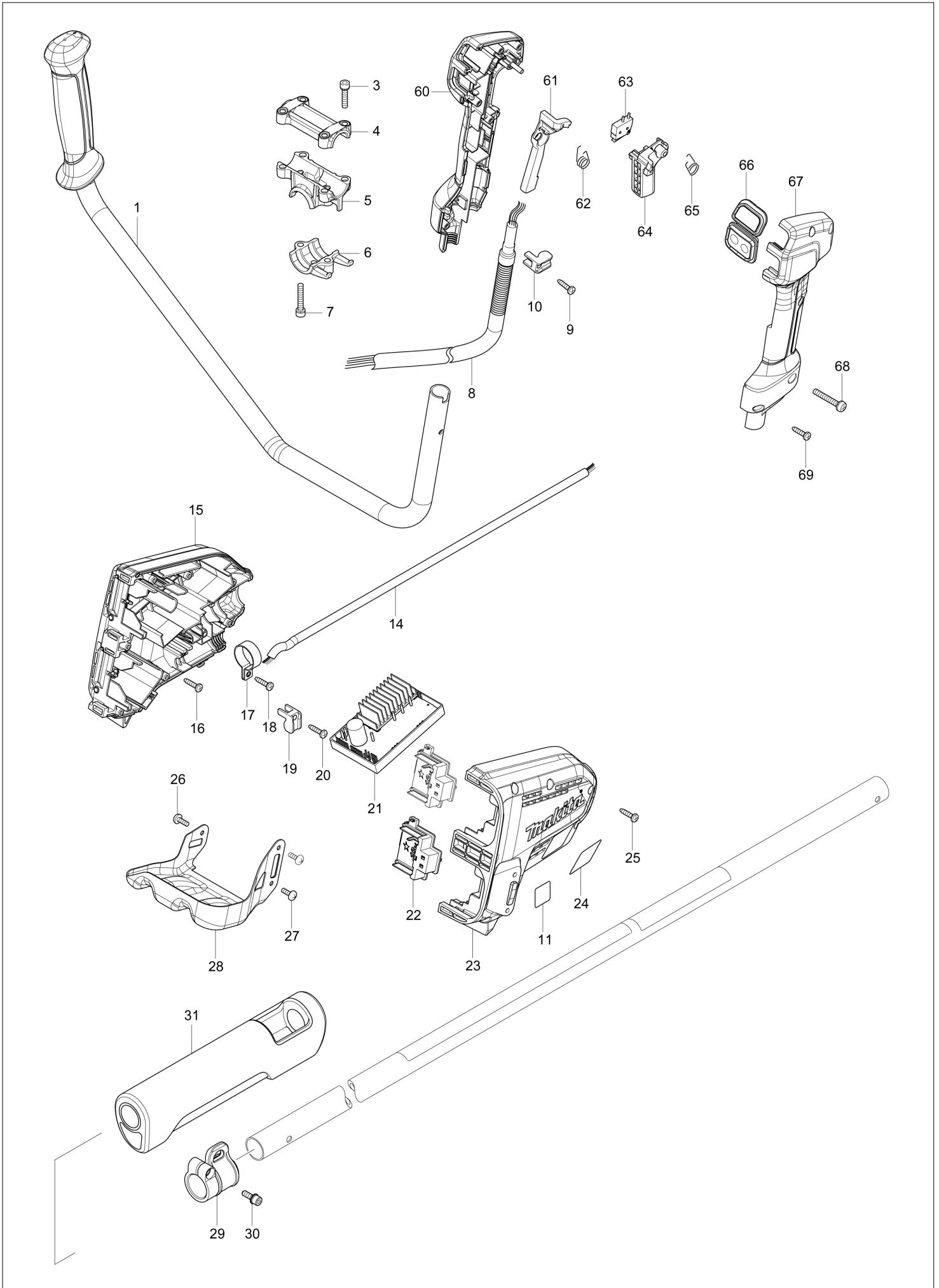
# Diagram / Parts List

**DUR365U**

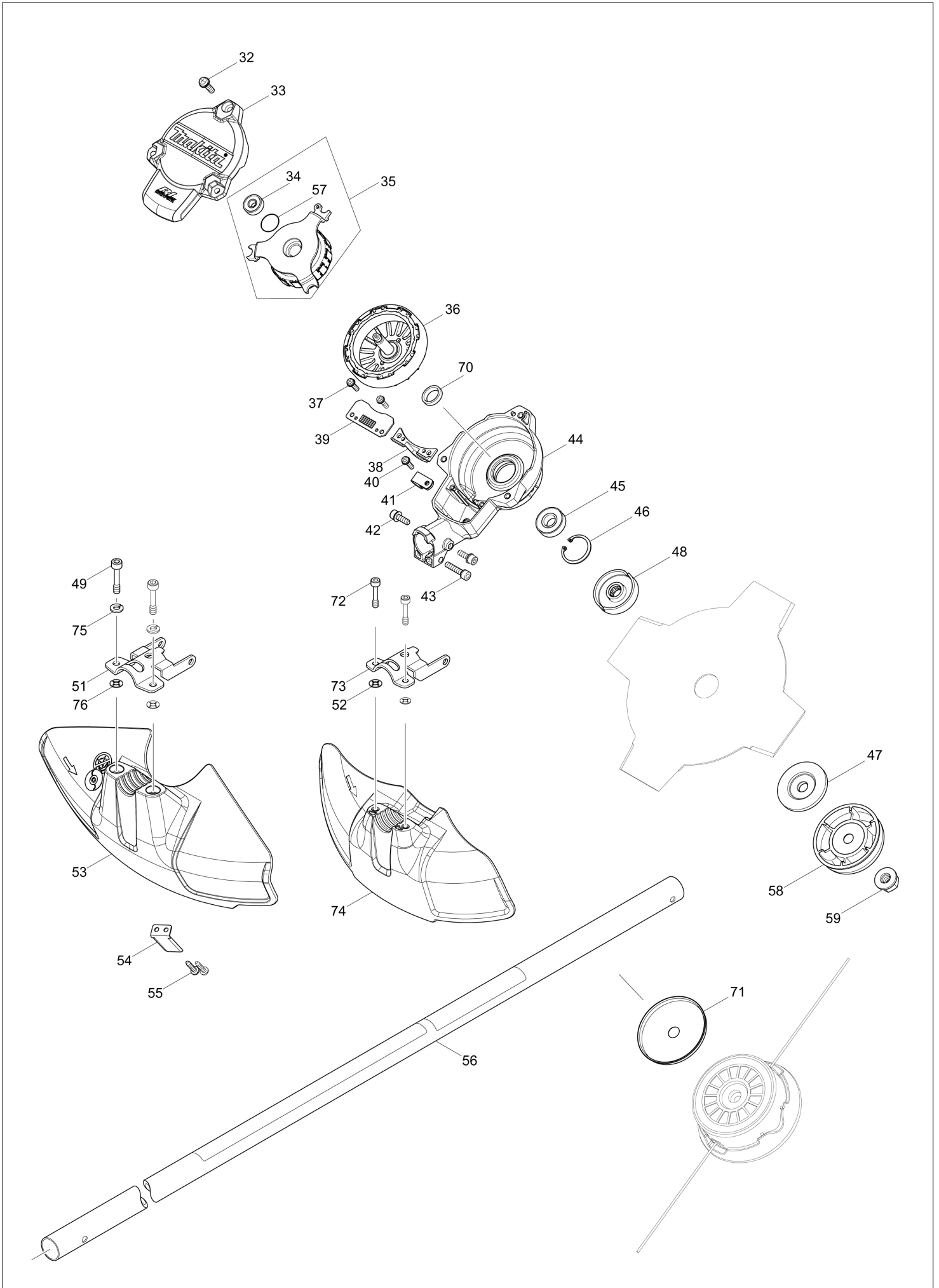
**CORDLESS GRASS TRIMMER**



(VN) DUR365U / CORDLESS GRASS TRIMMER



(VN) DUR365U / CORDLESS GRASS TRIMMER



<b>VN</b>	<b>VIETNAM</b>
-----------	----------------

### DUR365U / CORDLESS GRASS TRIMMER

Item	Sub	Parts No.	Parts Description	Qty	I/C	E/C No.	Close No.	Remark
001		143187-6	HANDLE COMPLETE	1				
003		922241-7	HEX. SOCKET HEAD BOLT M5X25	4				
004		318272-6	HANDLE HOLDER 1	1				
005		318273-4	HANDLE HOLDER 2	1				
006		318274-2	HANDLE HOLDER 3	1				
007		922251-4	HEX. SOCKET HEAD BOLT M5X30	2				
008		699069-5	POWER SUPPLY CORD UNIT	1				
009		266326-2	TAPPING SCREW 4X18	1				
010		687261-5	STRAIN RELIEF	1				
014		699067-9	POWER SUPPLY CORD UNIT	1				
015		183A64-6	HOUSING SET	1				
	C10	263005-3	RUBBER PIN 6	4				
	D10		INC. 23					
016		266326-2	TAPPING SCREW 4X18	3				
017		346248-3	CLAMP 24	1				
018		266326-2	TAPPING SCREW 4X18	1				
019		687261-5	STRAIN RELIEF	1				
020		266326-2	TAPPING SCREW 4X18	1				
021		143186-8	CONTROLLER COMPLETE	1			B6568	
021-1		144368-5	CONTROLLER COMPLETE	1	S	B6568	C5210	
021-2		140J17-2	CONTROLLER COMPLETE	1	<	C5210		
022		644808-8	TERMINAL	2				
023		183A64-6	HOUSING SET	1				
	C10	263005-3	RUBBER PIN 6	4				
	D10		INC. 15					
024		850U28-2	DUR365U NAME PLATE	1				
025		266326-2	TAPPING SCREW 4X18	7				
026		251314-2	+ SCREW M4X12	1				
027		251314-2	+ SCREW M4X12	2				
028		346858-6	BATTERY GUARD	1				
029		168478-4	HANGER	1				
030		922228-9	H.S.H.BOLT M5X18 WITH WR	1				
031		424463-0	CUSHION	1				
032		911233-1	PAN HEAD SCREW M5X20	3				
033		455626-7	TOP COVER	1				
034		210062-2	BALL BEARING 607ZZ	1			DA997	
034-1		210269-0	BALL BEARING 607ZZ	1	O	DA997		
035		529146-8	STATOR ASS'Y	1			C5061	
	D10		INC. 34,57				C5061	
035-1		529146-8	STATOR ASS'Y	1	O	C5061	DC143	
	D10		INC. 34,57			C5061	DC143	
035-2		520136-4	STATOR ASS'Y	1	<	DC143	DA997	
	D10		INC. 34,57			DC143	DA997	
035-3		520135-6	STATOR ASS'Y	1	O	DA997		
	D10		INC. 34,57			DA997		
036		619368-9	ROTOR	1			B8872	
036-1		619462-7	ROTOR	1	<	B8872		
037		911128-8	P.H.SCREW M4X16 WITH WR	2				
038		455628-3	INNER COVER	1				
039		620401-2	CONTROLLER B	1			B6568	
039-1		620562-8	CONTROLLER B	1	S	B6568	D7793	
039-2		620E48-2	CONTROLLER B	1	O	D7793		
040		911128-8	P.H.SCREW M4X16 WITH WR	1				
041		687042-7	STRAIN RELIEF	1				
042		922223-9	H.S.H.BOLT M5X16 WITH WR	2				
043		922241-7	HEX. SOCKET HEAD BOLT M5X25	1				
044		143039-1	MOTOR HOUSING COMPLETE	1				
045		211131-2	BALL BEARING 6001DDW	1				
046		962106-1	RETAINING RING R-28	1				
048		326518-6	RECEIVE WASHER A	1				
052		261156-6	POLYPROPYLENE WASHER 4	2				
056		143180-0	PIPE COMPLETE E	1				
	C10	819312-8	MAKITA LOGO LABEL	1				
	C20	806G53-7	CAUTION LABEL	1				
057		213325-5	O RING 19	1				

Interchange  
O : Yes  
X : No  
< : the new part can be substituted for the current.  
> : the current part can be substituted for the new.  
S : Interchangeable as a set.

