



VN	VIETNAM
----	---------

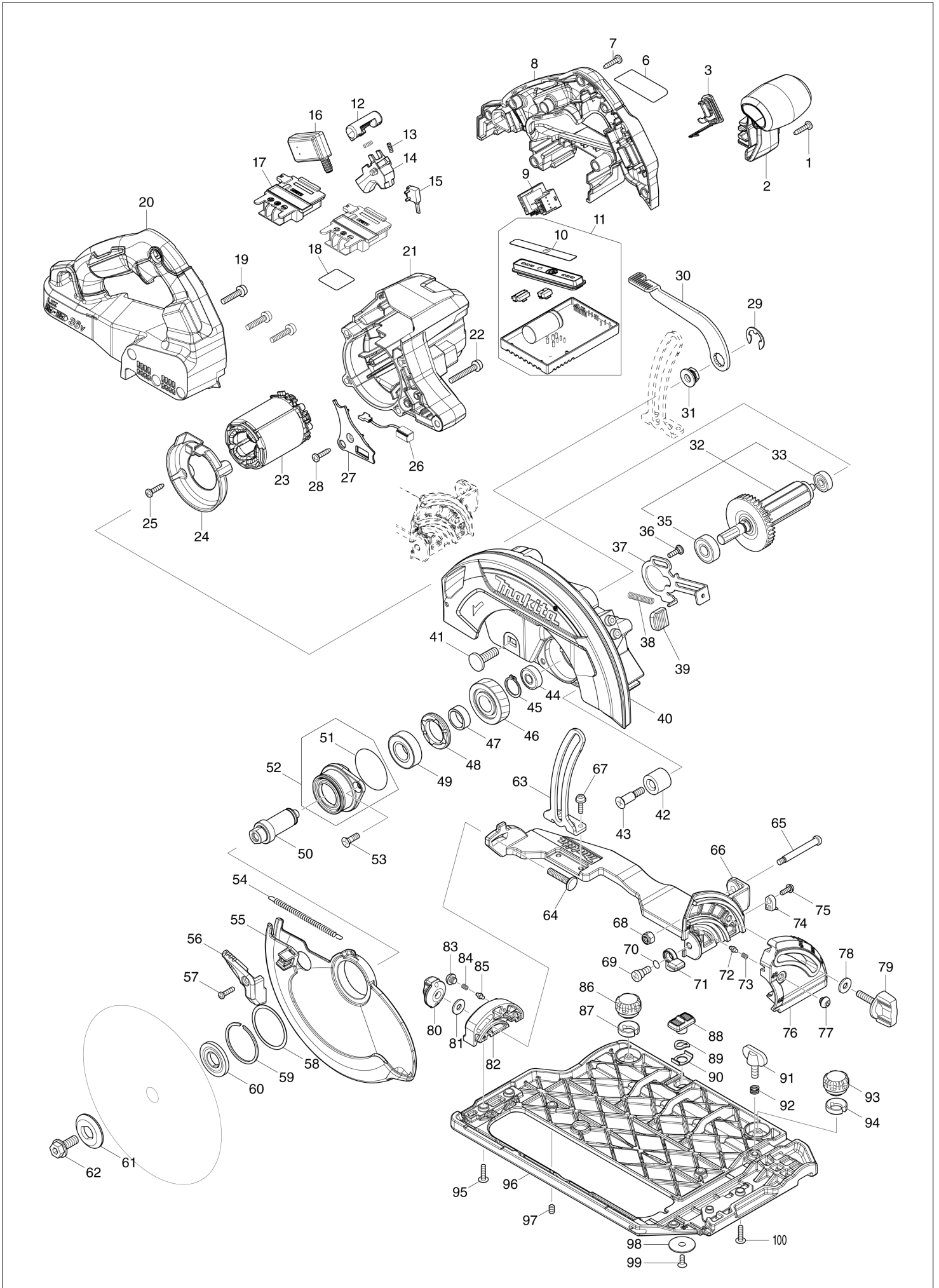
Diagram / Parts List

DHS783

185MM CORDLESS CIRCULAR SAW



(VN) DHS783 / 185MM CORDLESS CIRCULAR SAW



VN	VIETNAM
-----------	----------------

DHS783 / 185MM CORDLESS CIRCULAR SAW

Item	Sub	Parts No.	Parts Description	Qty	I/C	E/C No.	Close No.	Remark
001		266326-2	TAPPING SCREW 4X18	1				
002		458750-5	FRONT GRIP	1				
003		140F99-0	CAP COMPLETE	1				
	C10	213218-6	O RING 16	1			DA223	
	C11	213A05-9	O-RING16	1	O	DA223		
	C20	818H07-8	CAP LABEL	1				
006		855R05-1	DHS783 NAME PLATE	1				
007		266326-2	TAPPING SCREW 4X18	8				
008		183K52-3	HANDLE SET	1				
	C10	263005-3	RUBBER PIN 6	4				
	D10		INC. 20					
009		620750-7	SUB CONTROLLER	1				
010		812G25-2	INDICATION LABEL	1				
011		620984-2	CONTROLLER COMPLETE	1				
	D10		INC. 10					
012		419704-7	LOCK OFF BUTTON	1				
013		231433-0	COMPRESSION SPRING 4	2				
014		458594-3	SWITCH LEVER	1				
015		632M92-5	SWITCH UNIT	1				
016		651083-9	SWITCH C3XA-1PSPM	1				
017		643874-2	TERMINAL	2				
018		855R09-3	DHS783 SERIAL NO. LABEL	1				
019		911243-8	PAN HEAD SCREW M5X25	3				
020		183K52-3	HANDLE SET	1				
	C10	263005-3	RUBBER PIN 6	4				
	D10		INC. 8					
021		458746-6	MOTOR HOUSING	1				
022		911258-5	PAN HEAD SCREW M5X35	4				
023		629375-4	STATOR	1				
024		458749-0	BAFFLE PLATE	1				
025		266326-2	TAPPING SCREW 4X18	2				
026		620936-3	LED CIRCUIT	1				
027		458751-3	LIGHT COVER	1				
028		266326-2	TAPPING SCREW 4X18	1				
029		257953-6	BOW STOP RING E-12	1				
030		271447-7	LEVER 110	1				
031		252262-8	COLLERED HEX. NUT M8	1				
032		519534-7	ROTOR ASSY	1				
	D10		INC. 33,35					
033		210022-4	BALL BEARING 626DDW	1				
035		210059-1	BALL BEARING 6000DDW	1				
036		251529-1	+ PAN HEAD SCREW M4X14	1				
037		347441-2	SHAFT LOCK	1				
038		232381-6	COMPRESSION SPRING 6	1				
039		286039-9	CAP	1				
040		140F38-0	BLADE CASE COMPLETE	1				
	C10	213434-0	O RING 26	1				
	C20	818C46-8	SCALE LABEL	1				
041		266396-1	FLATHEAD SQUARENECKBOLT M8X24	1				
042		262185-2	RUBBER SLEEVE8	1				
043		251572-0	+ COUNTERSUNK HEAD SCREW M6X3	1				
044		210029-0	BALL BEARING 608ZZ	1				
045		961057-5	RETAINING RING S-17	1				
046		226838-7	HELICAL GEAR 37	1				
047		257451-0	RING 17	1				
048		285809-3	BEARING RETAINER 23-36	1				
049		210301-0	BALL BEARING 6003DDW	1				
050		327192-3	SPINDLE	1				
051		213565-5	O RING 42	1				
052		136021-7	BEARING BOX ASSY	1				
	D10		INC. 51					
053		265034-2	+ COUNTERSUNK HEAD SCREW M5X1	2				
054		232467-6	TENSION SPRING 4	1				
055		319740-2	SAFETY COVER	1				
056		271450-8	LEVER 37	1				

B:DHS783ZU(N)
C:DHS783T2JU(H)

Interchange
O : Yes
X : No
< : the new part can be substituted for the current.
> : the current part can be substituted for the new.
S : Interchangeable as a set.

VN	VIETNAM
-----------	----------------

DHS783 / 185MM CORDLESS CIRCULAR SAW

Item	Sub	Parts No.	Parts Description	Qty	I/C	E/C No.	Close No.	Remark
057		265178-8	PAN HEAD SCREW M4X16	1				
058		267337-0	FLAT WASHER 40	1				
059		257452-8	RETAINING RING (EXT) WR-40	1				
060		224593-5	INNER FLANGE 35	1				
061		224409-4	OUTER FLANGE 35	1				
062		266283-4	HEX. SOCKET HEX. BOLT M8X20	1				
063		347532-9	DEPTH GUIDE	1				
064		251920-3	CAP SQUARE NECK BOLT M6X30	1				
065		265118-6	+ PAN HEAD SCREW M5	1				
066		319829-6	FRAME	1				
067		911516-9	PAN HEAD SCREW M4X12	2				
068		252103-8	HEX. LOCK NUT M5-8	1				
069		251267-5	+ PAN HEAD SCREW M6	1				
070		213026-5	O RING 7	1				
071		319827-0	STOPPER	1				
072		263041-9	SHOULDER PIN 3-5	1				
073		231234-6	COMPRESSION SPRING 3.5	1				
074		419632-6	POSITION PLATE	1				
075		911118-1	PAN HEAD SCREW M4X12	1				
076		319830-1	FRONT ANGULAR PLATE	1				
077		266559-9	H.S.BUTTON HEAD BOLT M6X4	1				
078		253111-2	FLAT WASHER 6	1				
079		265776-8	THUMB SCREW M6X26	1				
080		252270-9	THUMB NUT M6	1				
081		253111-2	FLAT WASHER 6	1				
082		319831-9	REAR ANGULAR PLATE	1				
083		266559-9	H.S.BUTTON HEAD BOLT M6X4	1				
084		231234-6	COMPRESSION SPRING 3.5	1				
085		263041-9	SHOULDER PIN 3-5	1				
086		265775-0	THUMB SCREW M4X3	1				
087		419627-9	HOLDER	1				
088		458092-7	SLIDE LEVER	1				
089		253932-2	WAVE WASHER 10	1				
090		345977-5	PLATE	1				
091		265701-9	THUMB SCREW M6X14	1				
092		233376-2	COMPRESSION SPRING 8	1				
093		265775-0	THUMB SCREW M4X3	1				
094		419627-9	HOLDER	1				
095		265174-6	+ TRUSS HEAD SCREW M4X16	2				
096		319828-8	BASE	1				
097		266225-8	H.S.SET SCREW(FLAT POINT)M6X8	3				
098		345748-0	LOCK WASHER	1				
099		912112-6	COUNTERSUNK HEAD SCREW M4X10	1				
100		265174-6	+ TRUSS HEAD SCREW M4X16	2				
A01		164095-8	GUIDE RULE	1				
A02		196520-1	DUST NOZZLE SET	1				
	C10	911128-8	P.H.SCREW M4X16 WITH WR	1				
A03		783204-6	HEX. WRENCH 6	1				
A04		B-62022	TCT BLADE185X24T WOOD EFFICUT	1				
A06C		***DC18RD	DC18RD TWO PORT FAST CHARGER	1				
	D10		COMPO-PARTS					
A07C		197280-8	BATTERY BL1850B SET	2			C5219	
A07-1C		197280-8	BATTERY BL1850B SET	2	O	C5219		
A08C		819H70-4	DHS783T2JU INDICATION LABEL	1				
A09C		819H71-2	DHS783T2JU PLASTIC CASE LABEL	2				
A10C		821552-6	CONNECTOR PLASTIC CASE (TYPE4)	1				
	C10	453974-8	LATCH	4				
A11C		839750-8	INNER TRAY	1			C8258	
A11-1C		835C85-3	INNER TRAY	1	<	C8258		
A12C		821550-0	CONNECTOR PLASTIC CASE (TYPE2)	1				
	C10	453974-8	LATCH	4				
A13C		454247-2	PIN 4	4				
A14C		837925-3	WAVE SPONGE 240X350	1				
A15C		837926-1	WAVE SPONGE 285X380	1				
A16B		199393-1	WIRELESS UNIT SET	1			D4357	

B:DHS783ZU(N)
C:DHS783T2JU(H)

Interchange
O : Yes
X : No
< : the new part can be substituted for the current.
> : the current part can be substituted for the new.
S : Interchangeable as a set.

