



VN	VIETNAM
----	---------

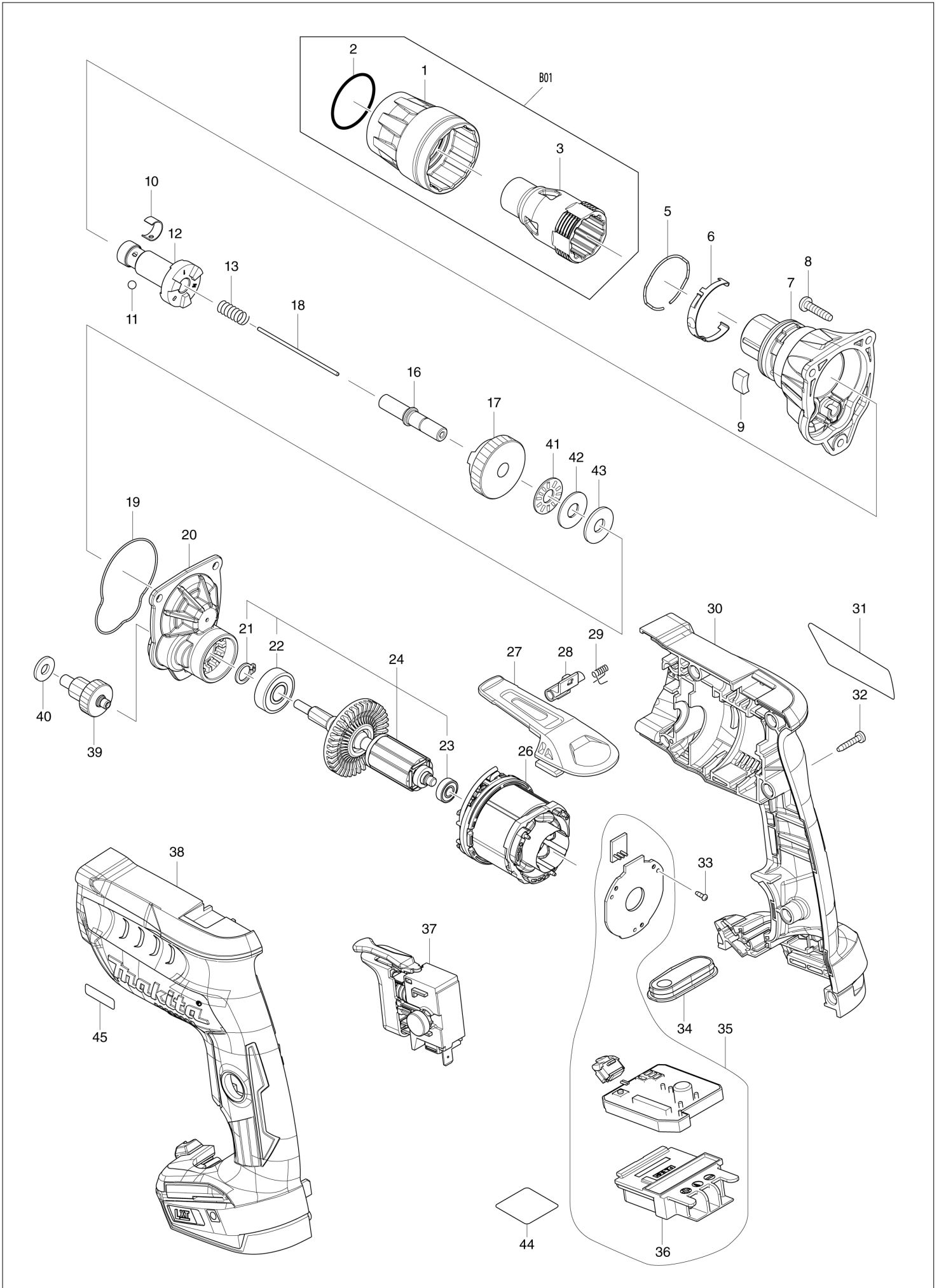
Diagram / Parts List

DFS251

CORDLESS SCREWDRIVER



(VN) DFS251 / CORDLESS SCREWDRIVER



VN	VIETNAM
-----------	----------------

DFS251 / CORDLESS SCREWDRIVER

Item	Sub	Parts No.	Parts Description	Qty	I/C	E/C No.	Close No.	Remark
001		455591-0	LOCK RING	1				
002		424235-3	SEAL RING 30	1				
003		450968-4	LOCATOR 3/8"	1				
005		234348-0	RING SPRING 30	1				
006		232245-4	LEAF SPRING	1				
007		144157-8	GEAR HOUSING COMPLETE	1				
	C10	213139-2	DUST SEAL 13	1				
008		265995-6	TAPPING SCREW 4X18	3			C7193	
008-1		265A48-7	TAPPING SCREW 4X18	3	O	C7193		
009		423413-2	RUBBER PLATE	1				
010		232050-9	LEAF SPRING	1				
011		216001-0	STEEL BALL 3.5	1				
012		326839-6	SPINDLE 180N	1				
013		233126-5	COMPRESSION SPRING 6	1				
016		256343-0	COLLARED PIN 8	1				
017		221479-4	SPUR GEAR 34-180	1				
018		256342-2	ROD 2	1				
019		424928-2	SEAL RING	1				
020		144161-7	GEAR HOUSING COVER COMPLETE	1				
	C10	210003-8	BALLBEARING 685ZZ	1				
021		961005-4	RETAINING RING S-9	1				
022		211493-8	BALL BEARING 609DDW	1				
023		210039-7	BALL BEARING 695DDW	1			D4336	
023-1		211157-4	BALL BEARING 695ZZ	1	O	D4336		
024		519424-4	ROTOR ASS'Y	1			D4336	
	D10		INC. 21-23				D4336	
024-1		510471-8	ROTOR ASS'Y	1	O	D4336		
	D10		INC. 21-23			D4336		
026		629135-4	STATOR	1				
027		162272-6	HOOK	1				
028		142908-3	LEVER COMPLETE	1			C7675	
028-1		140M84-5	LEVER COMPLETE	1	<	C7675		
029		233619-2	TORSION SPRING 3	1				
030		183F17-5	HOUSING SET	1				
	C10	263005-3	RUBBER PIN 6	2				
	C20	252126-6	HEX. LOCK NUT M4-7	2				
	D10		INC. 38					
031		852V41-2	DFS251 NAME PLATE	1				
032		266130-9	TAPPING SCREW BIND PT 3X16	7				
033		266490-9	TAPPING SCREW PT 2X6	3				
034		144162-5	SWITCH PLATE COMPLETE	1				
035		620616-1	CONTROLLER COMPLETE	1				
	D10		INC. 36					
036		643860-3	TERMINAL	1				
037		650733-3	SWITCH C3JW-4B-2L	1				
038		183F17-5	HOUSING SET	1				
	C10	263005-3	RUBBER PIN 6	2				
	C20	252126-6	HEX. LOCK NUT M4-7	2				
	D10		INC. 30					
039		221478-6	GEAR COMPLETE 9-23	1				
040		267100-1	FLAT WASHER 6	1				
041		216415-3	THRUST NEEDLE CAGE 821	1			Y07519	
041-1		216415-3	THRUST NEEDLE CAGE 821	1	O	Y07519		
042		216212-7	WASHER 821	1				
043		261111-8	URETHANE WASHER 8	1				
044		852U75-9	DFS251 SERIAL NO. LABEL	1				
045		810W86-2	2500RPM INDICATION LABEL	1				
A01		266622-8	+ TRUSS HEAD SCREW M4X12	1				
A02		346317-0	HOOK	1				
A03		784802-9	MAGNETIC SOCKET BIT 3/8-65	1				
A04A		450128-8	BATTERY COVER	1				
A04B		450128-8	BATTERY COVER	1				
A04C		450128-8	BATTERY COVER	1				
A05A		***DC18RC	DC18RC FAST CHARGER	1				
	D10		COMPO-PARTS					

A:DFS251RFE(H)
 B:DFS251RME(H)
 C:DFS251RTE(H)

Interchange
 O : Yes
 X : No
 < : the new part can be substituted for the current.
 > : the current part can be substituted for the new.
 S : Interchangeable as a set.

