



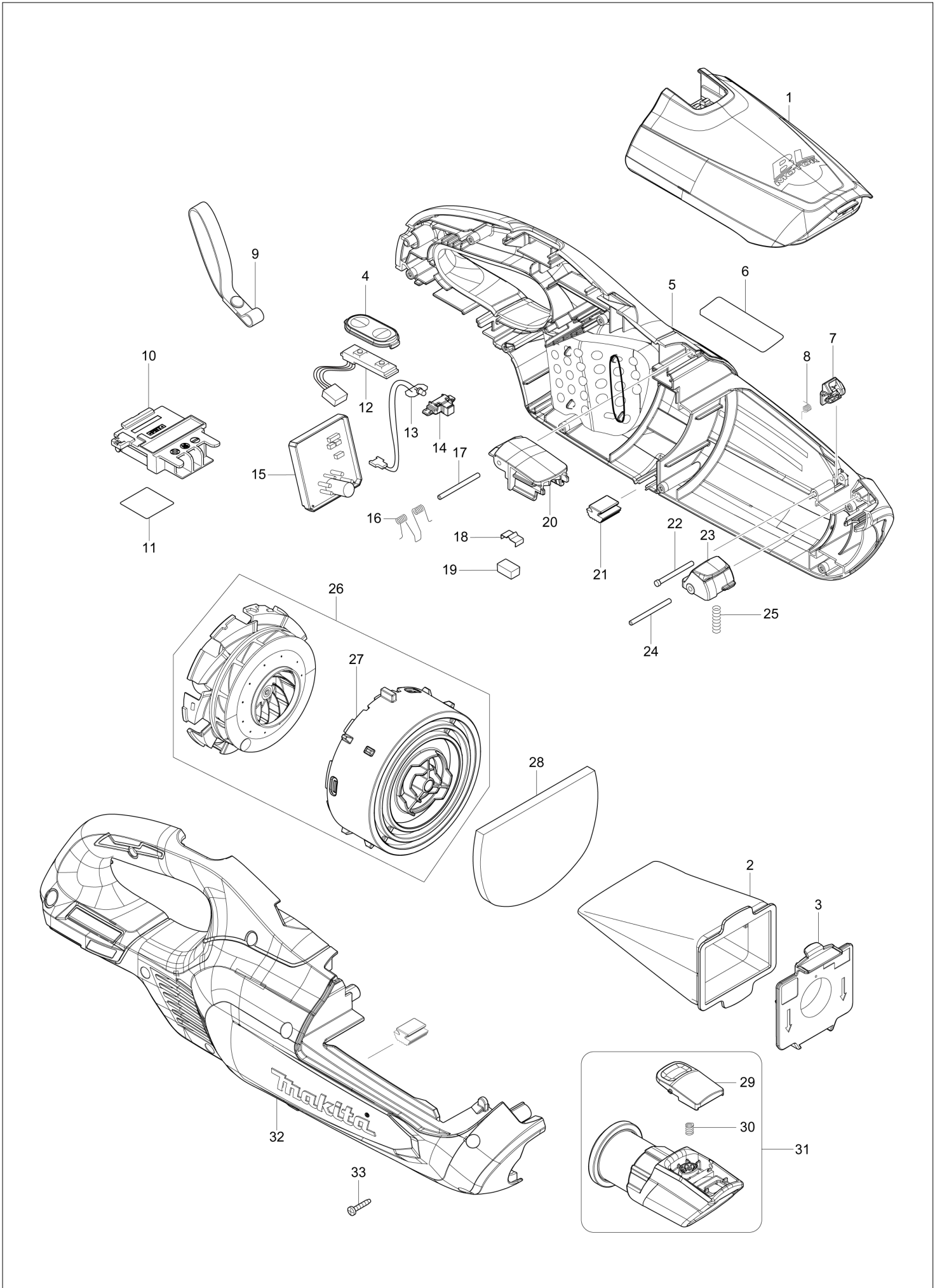
VN	VIETNAM
----	---------

# Diagram / Parts List

**DCL282F**

**CORDLESS CLEANER**

(VN) DCL282F / CORDLESS CLEANER



<b>VN</b>	<b>VIETNAM</b>
-----------	----------------

### DCL282F / CORDLESS CLEANER

Item	Sub	Parts No.	Parts Description	Qty	I/C	E/C No.	Close No.	Remark
001A		140L57-2	FRONT COVER COMPLETE	1				
001B		140L57-2	FRONT COVER COMPLETE	1				
001C		140L56-4	FRONT COVER COMPLETE	1				
001D		140L56-4	FRONT COVER COMPLETE	1				
001E		140T70-8	FRONT COVER COMPLETE	1				
	C10	424093-7	SEAL	1				
002		166119-6	EASY SHAKE OFF DUST BAG	1				
003		140K23-3	VALVE STAY COMPLETE	1				
004		144096-2	SWITCH PLATE COMPLETE	1				
005A		183M11-9	HOUSING SET	1				
005B		183M11-9	HOUSING SET	1				
005C		183L70-7	HOUSING SET	1				
005D		183L70-7	HOUSING SET	1				
005E		183P31-1	HOUSING SET	1				
	C10	263005-3	RUBBER PIN 6	2				
	C20	422458-7	SPONGE SHEET 55-80	2				
	C30	213008-7	O RING 22.4	2				
	D10		INC. 21,32					
006		855T39-6	DCL282F NAME PLATE	1				
007A		459352-0	STOPPER PLATE	1				
007B		459352-0	STOPPER PLATE	1				
007C		459327-9	STOPPER PLATE	1				
007D		459327-9	STOPPER PLATE	1				
007E		459302-5	STOPPER PLATE	1				
008		232484-6	TORSION SPRING 4	1				
009A		163400-6	HANDSTRAP	1		D9830		
009B		163400-6	HANDSTRAP	1		D9830		
009C		163400-6	HANDSTRAP	1		D9830		
009D		163400-6	HANDSTRAP	1		D9830		
010		643874-2	TERMINAL	1				
011		855T46-9	DCL282F SERIAL NO. LABEL	1				
012		620A77-1	SWITCH UNIT	1				
013		620A76-3	LED CIRCUIT	1			D5628	
013-1		620E82-2	LED CIRCUIT	1	<	D5628		
014		459478-8	LENS CASE	1				
015		620A75-5	CONTROLLER	1				
016		233580-3	TORSION SPRING 4	1				
017		268271-7	PIN 3	1				
018		232264-0	LEAF SPRING	1				
019		424367-6	RUBBER	1				
020A		459350-4	FRONT COVER JOINT	1				
020B		459350-4	FRONT COVER JOINT	1				
020C		459330-0	FRONT COVER JOINT	1				
020D		459330-0	FRONT COVER JOINT	1				
020E		459351-2	FRONT COVER JOINT	1				
021		422460-0	RUBBER PLATE	2				
022		256590-3	FLAT FILLISTER HD. PIN 3	1				
023A		459348-1	BUTTON B	1				
023B		459348-1	BUTTON B	1				
023C		459329-5	BUTTON B	1				
023D		459329-5	BUTTON B	1				
023E		459349-9	BUTTON B	1				
024		268271-7	PIN 3	1				
025		233344-5	COMPRESSION SPRING 4	1				
026		136092-4	MOTOR ASS'Y	1				
	D10		INC. 27					
027		459322-9	FAN COVER	1				
028		424804-0	SPONGE SHEET 76-110	1				
029		458939-5	BUTTON A	1				
030		232485-4	COMPRESSION SPRING 5	1				
031A		136107-7	INLET ASS'Y	1				
031B		136107-7	INLET ASS'Y	1				
031C		136095-8	INLET ASS'Y	1				
031D		136095-8	INLET ASS'Y	1				
031E		136035-6	INLET ASSY	1				

A:DCL282FZ(N)  
 B:DCL282FRF(H)  
 C:DCL282FZW(N)  
 D:DCL282FRFW(H)  
 E:DCL282FZB(N)

Interchange  
 O : Yes  
 X : No  
 < : the new part can be substituted for the current.  
 > : the current part can be substituted for the new.  
 S : Interchangeable as a set.

