



VN	VIETNAM
----	---------

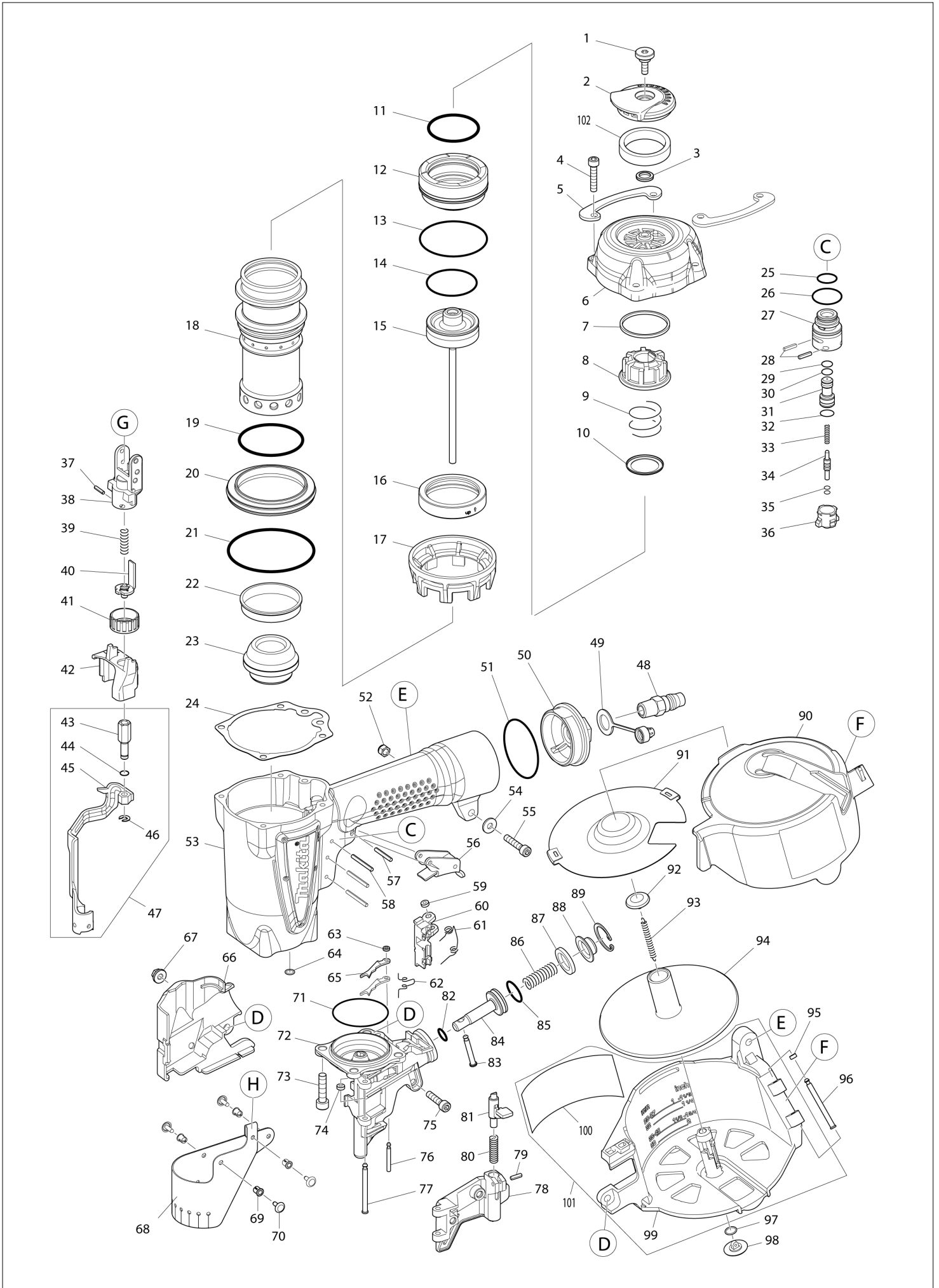
# Diagram / Parts List

**AN560**

**AIR NAILER**



# (VN) AN560 / AIR NAILER



<b>VN</b>	<b>VIETNAM</b>
-----------	----------------

### AN560 / AIR NAILER

Item	Sub	Parts No.	Parts Description	Qty	I/C	E/C No.	Close No.	Remark
001		BA00000001	HEX.SOCKET HEAD BOLT M5X13	1				
002		BA00000003	EXHAUST COVER	1				
003		BA00000005	RUBBER PAD 10	1				
004		BA00000007	HEX.SOCKET HEAD BOLT M5X25	4				
005		BA00000002	REAR HOUSING GUARD	2				
006		BA00000172	TOP CAP COMPLETE	1				
007		BA00000008	FLAT WASHER 37	1				
008		BA00000014	REAR CUSHION	1				
009		BA00000173	COMPRESSION SPRING 23	1				
010		BA00000013	CAP WASHER 23	1				
011		BA00000011	O-RING 42	1				
012		BA00000171	HEAD VALVE	1				
013		BA00000012	O-RING 53	1				
014		BA00000017	O-RING 38	1				
015		BA00000018	DRIVER COMPLETE	1				
016		BA00000015	VALVE SEAT	1				
017		BA00000025	COLLAR	1				
018		BA00000168	CYLINDER	1				
019		BA00000020	O-RING 46.3*3.1	1				
020		BA00000169	CYLINDER SEPARATOR	1				
021		BA00000022	O-RING 60	1				
022		BA00000023	SHEET RING	1				
023		BA00000024	CUSHION F	1				
024		BA00000016	TOP CAP GASKET	1				
025		BA00000026	O-RING 12	1				
026		BA00000028	O-RING 19	1				
027		BA00000027	TRIGGER VALVE GUIDE	1				
028		BA00000036	SPRING PIN 3-12	2				
029		BA00000030	O-RING 6	1				
030		BA00000030	O-RING 6	1				
031		BA00000029	PILOT VALVE	1				
032		BA00000031	O-RING 9	1				
033		BA00000032	COMPRESSION SPRING 3	1				
034		BA00000033	TRIGGER VALVE STEM	1				
035		BA00000034	O-RING 3	2				
036		BA00000035	TRIGGER VALVE CASE	1				
037		BA00000074	SPRING PIN 2.5-10	1				
038		BA00000073	HOLDER	1				
039		BA00000075	COMPRESSION SPRING 6	1				
040		BA00000040	SEQUENTIAL TRIGGER	1				
041		BA00000077	ADJUSTER	1				
042		BA00000078	ADJUSTER GUIDE COMPLETE	1				
043		BA00000080	ADJUSTER ROD	1				
044		BA00000081	O-RING 5	1				
045		BA00000254	CONTACT ARM	1				
046		BA00000083	STOP RING E-4	1				
047		BA00000255	CONTACT ARM ASSY	1				
048		BA00000045	ONE-TOUCH JOINT 20PM	1				
049		BA00000044	CAP 9	1				
050		BA00000042	INLET CAP	1				
051		BA00000043	O-RING 43	1				
052		BA00000095	HEX. LOCK NUT M5	1				
053		BA00000170	HOUSING COMPLETE	1				
054		BA00000093	FLAT WASHER 5	1				
055		BA00000092	HEX.SOCKET HEAD BOLT M5X25	1				
056		BA00000039	TRIGGER ASSY	1				
057		BA00000037	SPRING PIN 3-22	1				
058		BA00000038	SPRING PIN 3-30	3				
059		BA00000058	URETHANE RING 3	1				
060		BA00000056	FEEDING CLAW	1				
061		BA00000057	TORSION SPRING 5	1				
062		BA00000061	TORSION SPRING 3	1				
063		BA00000060	URETHANE RING 2	1				
064		BA00000051	O-RING 6	1				
065		BA00000059	CHECK CLAW	2				

Interchange  
O : Yes  
X : No  
< : the new part can be substituted for the current.  
> : the current part can be substituted for the new.  
S : Interchangeable as a set.

