

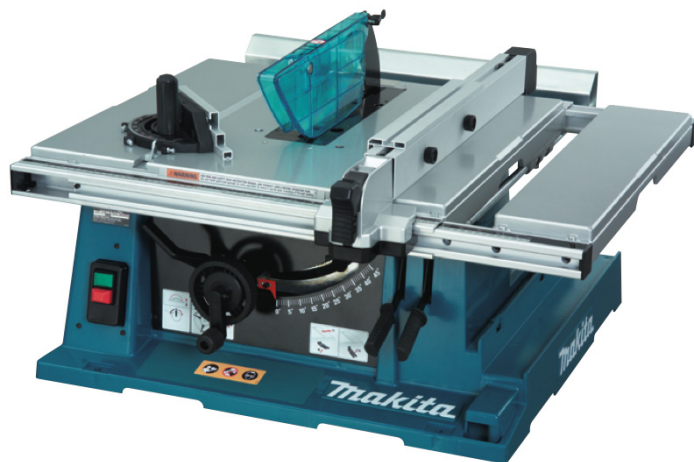


VN	VIETNAM
----	---------

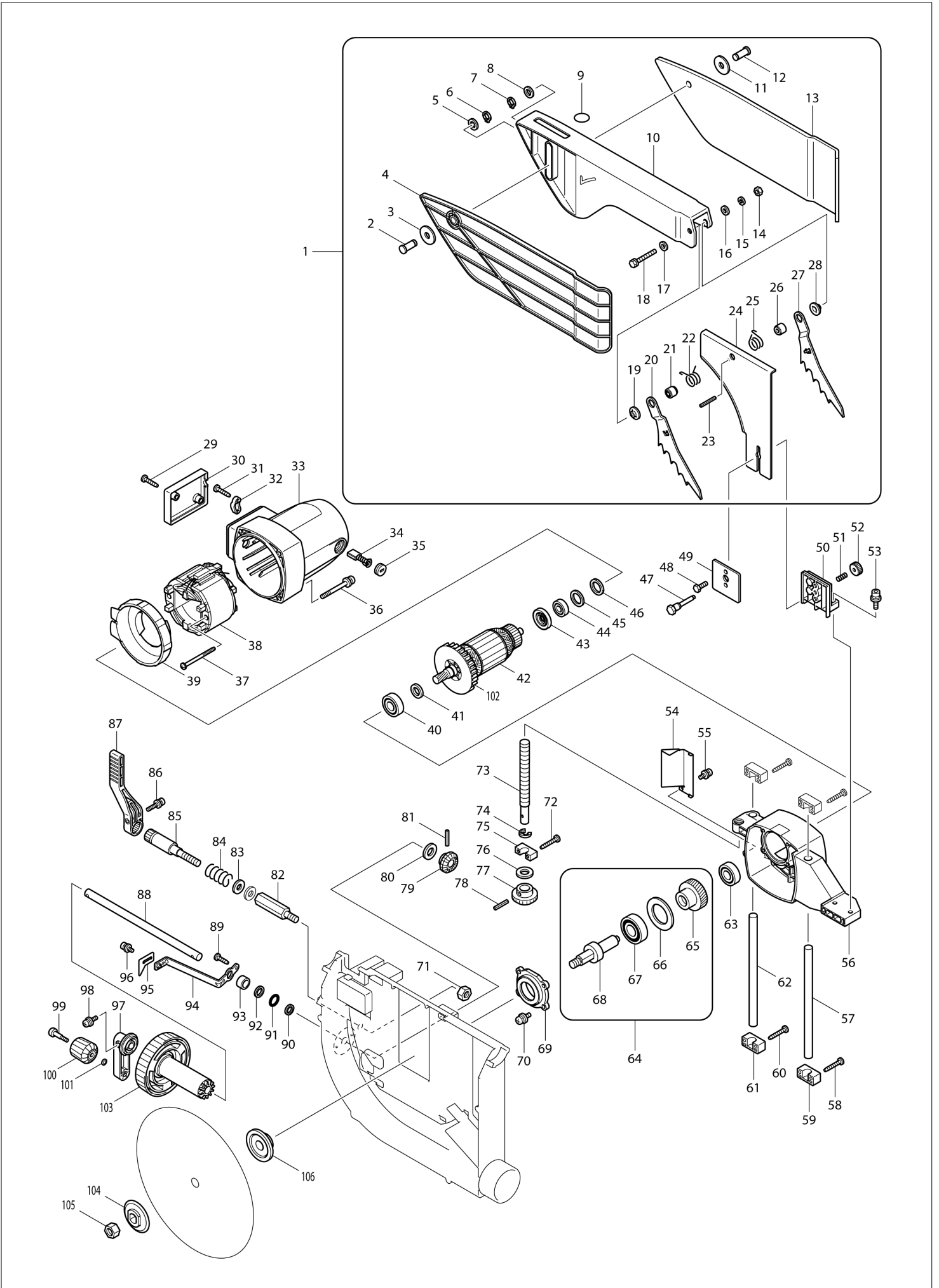
# Diagram / Parts List

**2704**

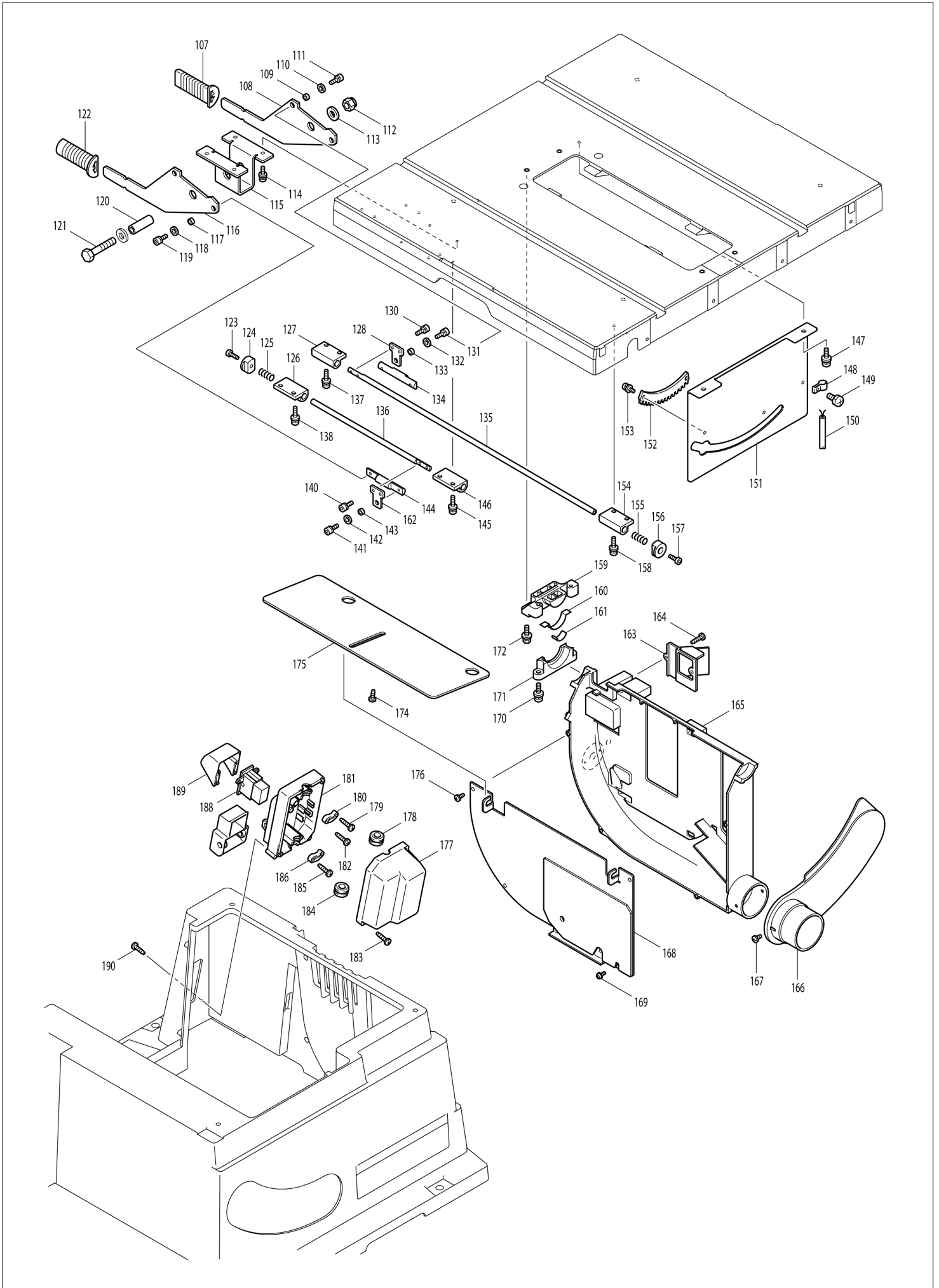
**TABLE SAW 255MM**



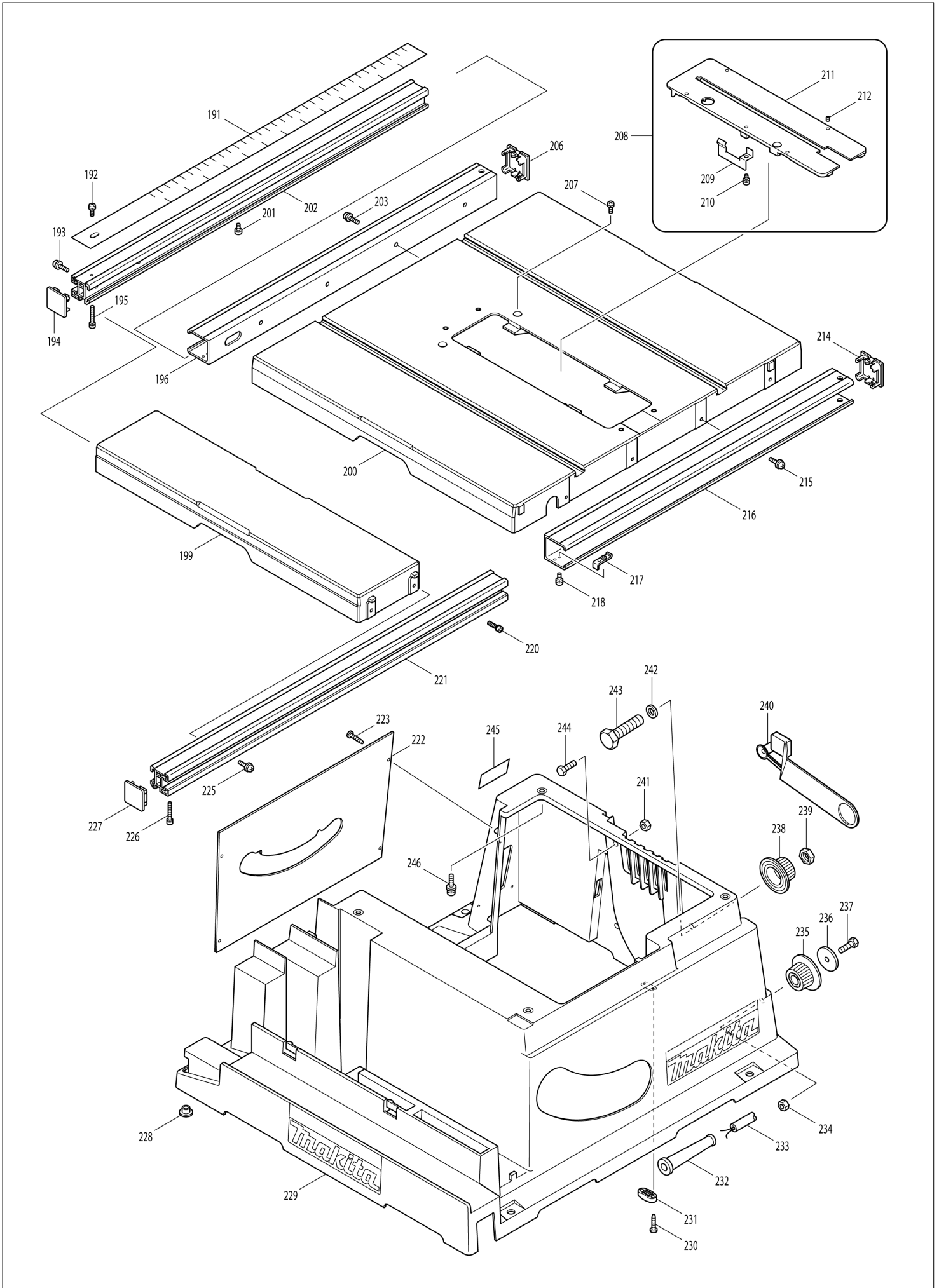
(VN) 2704 / TABLE SAW 255MM



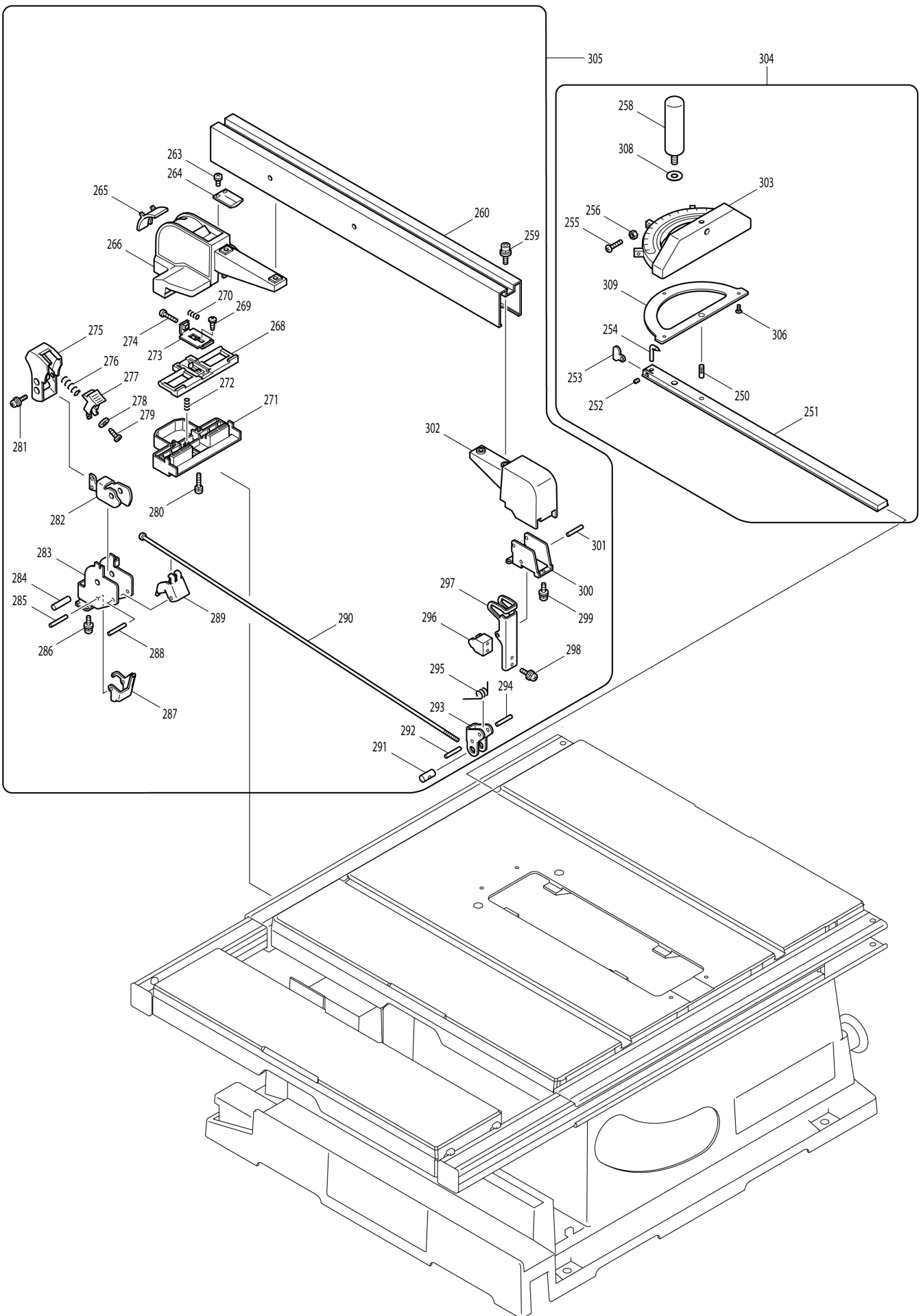
(VN) 2704 / TABLE SAW 255MM

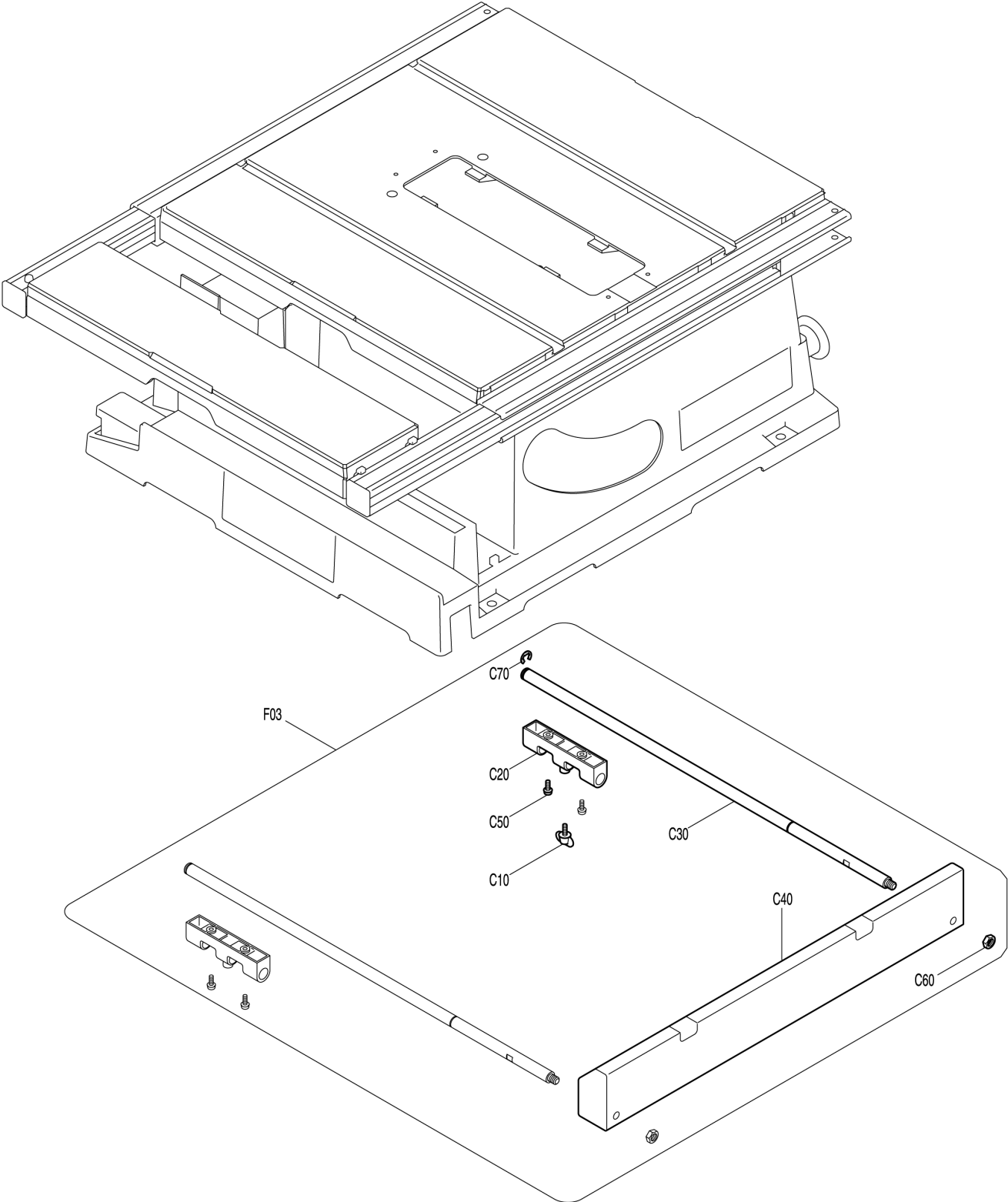


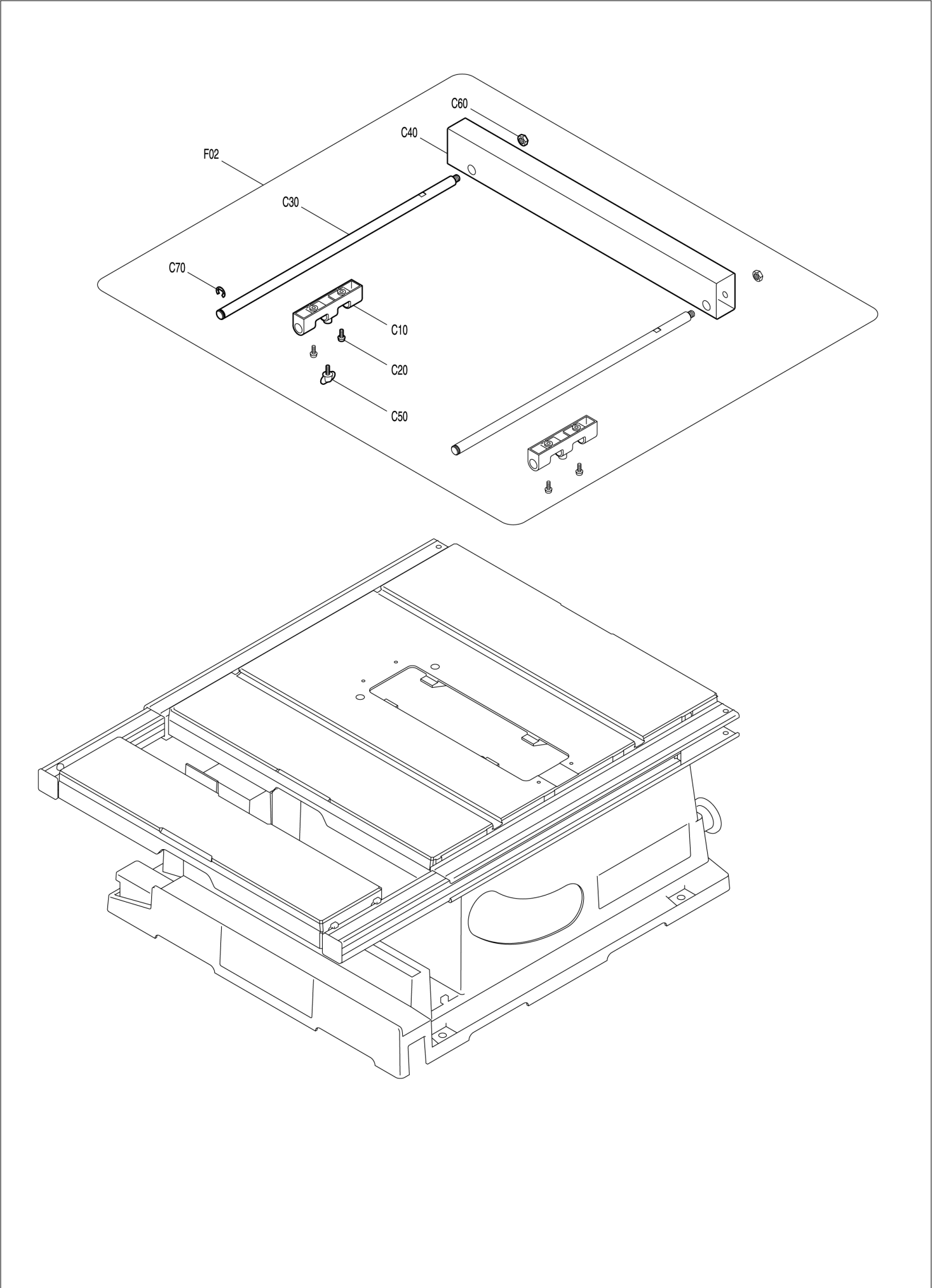
(VN) 2704 / TABLE SAW 255MM



(VN) 2704 / TABLE SAW 255MM







<b>VN</b>	<b>VIETNAM</b>
-----------	----------------

## 2704 / TABLE SAW 255MM

Item	Sub	Parts No.	Parts Description	Qty	I/C	E/C No.	Close No.	Remark
001		122790-6	SAFETY GUARD ASSEMBLY	1				
	C10	890408-4	CAUTION LABEL	1				
	D10		INC. 2-28					
002		268111-9	PIN 10	1				
003		253197-6	FLAT WASHER 10	1				
004		418941-0	SUB COVER R	1				
005		253828-7	FLAT WASHER 10	1				
006		961006-2	RETAINING RING S-10	1				
007		961006-2	RETAINING RING S-10	1				
008		253828-7	FLAT WASHER 10	1				
009		817283-3	CAUTION LABEL	1				
010		418940-2	COVER	1				
011		253197-6	FLAT WASHER 10	1				
012		268111-9	PIN 10	1				
013		418942-8	SUB COVER L	1				
014		931302-2	HEX. NUT M6	1				
015		942151-2	SPRING WASHER 6	1			C3118	
015-1		253428-3	SPRING WASHER 6	1	O	C3118		
016		941151-9	FLAT WASHER 6	1				
017		941151-9	FLAT WASHER 6	1				
018		265462-1	HEX. BOLT M6X50	1				
019		344533-8	COLLAR	1				
020		344527-3	FINGER R	1			C9585	
020-1		347233-9	FINGER R	1	O	C9585		
021		257680-5	SLEEVE 6	1				
022		231541-7	TORSION SPRING 17	1				
023		951122-8	SPRING PIN 4-28	1				
024		345599-1	RIVING KNIFE	1				
025		231542-5	TORSION SPRING 17	1				
026		257680-5	SLEEVE 6	1				
027		344528-1	FINGER L	1			C9585	
027-1		347232-1	FINGER L	1	O	C9585		
028		344533-8	COLLAR	1				
029		265995-6	TAPPING SCREW 4X18	2			C7193	
029-1		265A48-7	TAPPING SCREW 4X18	2	O	C7193		
030		416341-8	COVER	1				
031		265995-6	TAPPING SCREW 4X18	2			C7193	
031-1		265A48-7	TAPPING SCREW 4X18	2	O	C7193		
032		687054-0	STRAIN RELIEF	1				
033		154602-5	MOTOR HOUSING COMPLETE	1				
	C11	643653-8	BRUSH HOLDER 6.5-13.5	2				
034		B-80329	CARBON BRUSH SET CB-153A	1				
035		643650-4	BRUSH HOLDER CAP 6.5-13.5	2			B0305	
035-1		643650-4	BRUSH HOLDER CAP 6.5-13.5	2	O	B0305		
036		911383-2	PAN HEAD SCREW M6X60	4				
037		266029-8	TAPPING SCREW 5X65	2			C7143	
037-1		266352-1	TAPPING SCREW 5X65	2	O	C7143		
038		596183-7	FIELD ASS'Y 220-240V	1			B1835	
	C10	654020-2	RING TERMINAL	2			B1835	
	C20	654553-7	CONNECTOR 34137	2			B1835	
038-1		596410-2	FIELD ASS'Y 220-240V	1	S	B1835		
	C10	654020-2	RING TERMINAL	2		B1835		
	C20	654553-7	CONNECTOR 34137	2		B1835		
039		416331-1	BAFFLE PLATE	1				
040		211228-7	BALL BEARING 6202DDW	1				
041		253147-1	FLAT WASHER 15	1				
042		510071-4	ARMATURE ASS'Y 220V	1			B1835	
	D10		INC. 40,41,43,44,102				B1835	
042-1		518765-5	ARMATURE ASS'Y 240V	1	S	B1835		
	D10		INC. 40,41,43,44,102			B1835		
043		681640-9	INSULATION WASHER	1				
044		211088-7	BALL BEARING 6000DDW	1				
045		253198-4	FLAT WASHER 18	1				
046		261129-9	URETHANE WASHER 18	1				
048		921331-3	HEX. BOLT M6X20	2				

Interchange  
O : Yes  
X : No  
< : the new part can be substituted for the current.  
> : the current part can be substituted for the new.  
S : Interchangeable as a set.



<b>VN</b>	<b>VIETNAM</b>
-----------	----------------

### 2704 / TABLE SAW 255MM

Item	Sub	Parts No.	Parts Description	Qty	I/C	E/C No.	Close No.	Remark
049		345525-0	PRESSURE PLATE	1				
050		317871-1	KNIFE HOLDER	1				
053		922334-0	HEX. SOCKET HEAD BOLT M6X20	2				
054		344536-2	GEAR HOUSING PLATE	1				
055		911213-7	PAN HEAD SCREW M5X12	1				
056		154603-3	GEAR HOUSING COMPLETE	1			C2016	
	C10	263005-3	RUBBER PIN 6	1			C2016	
056-1		126760-7	GEAR HOUSING COMPLETE	1	<	C2016		
	C10	263005-3	RUBBER PIN 6	1		C2016		
057		323736-7	GUIDE BAR	1				
058		266040-0	TAPPING SCREW CT 4X25	4				
059		416340-0	GUIDE BAR RETAINER	2				
060		266040-0	TAPPING SCREW CT 4X25	4				
061		416340-0	GUIDE BAR RETAINER	2				
062		323736-7	GUIDE BAR	1				
063		211051-0	BALL BEARING 609LLB	1				
064		154595-6	SPINDLE COMPLETE	1				
	D10		INC. 65-68					
065		226602-6	HELICAL GEAR 42	1				
066		267170-0	FLAT WASHER 34	1				
067		211278-2	BALL BEARING 6203DDW	1				
068		324556-2	SPINDLE	1				
069		316933-2	BEARING BOX	1				
070		911233-1	PAN HEAD SCREW M5X20	4				
071		931502-4	HEX. NUT M10	1				
072		266040-0	TAPPING SCREW CT 4X25	2				
073		322968-3	SCREW BAR	1				
074		961016-9	STOP RING E-10	1				
075		416339-5	SCREW BAR RETAINER	1				
076		941302-4	FLAT WASHER 12	1				
077		226747-0	STRAIGHT BEVEL GEAR	1				
078		951116-3	SPRING PIN 4-20	1				
079		226747-0	STRAIGHT BEVEL GEAR	1				
080		941302-4	FLAT WASHER 12	1				
081		951116-3	SPRING PIN 4-20	1				
082		324562-7	LOCK LEVER CONNECTOR	1				
083		253024-7	FLAT WASHER 10	2				
084		231315-6	COMPRESSION SPRING 14	1				
085		322967-5	LOCK LEVER SHAFT	1				
086		922232-8	HEX. SOCKET HEAD BOLT M5X20	1				
087		272248-6	LEVER 120	1				
088		324563-5	HANDLE SHAFT	1				
089		266034-5	TAPPING SCREW CT 4X16	2				
090		253143-9	FLAT WASHER 12	1				
091		213107-5	O RING 12	1				
092		253052-2	FLAT WASHER 12	1				
093		214114-1	PLANE BEARING 12	1				
094		345520-0	STAY	1				
095		344543-5	POINTER	1				
096		922103-9	HEX. SOCKET HEAD BOLT M4X6	1				
097		271074-0	ARM 60	1				
098		911223-4	PAN HEAD SCREW M5X16	1				
099		251382-5	+ PAN HEAD SCREW M5	1				
100		271423-1	KNOB 32	1				
101		267010-2	FLAT WASHER 5	1				
102		240003-4	FAN 80	1				
103		271073-2	HANDLE 100	1				
104		224347-0	OUTER FLANGE 53	1			A9370	
104-1		224482-4	OUTER FLANGE 53	1	O	A9370		
105		252155-9	HEX. NUT M12-19	1				
106		224401-0	INNER FLANGE 53	1				
107		273523-3	GRIP	1				
108		345534-9	HANDLE PLATE	1				
109		257161-9	RING 4	1				
110		941051-3	FLAT WASHER 4	1				

Interchange  
O : Yes  
X : No  
< : the new part can be substituted for the current.  
> : the current part can be substituted for the new.  
S : Interchangeable as a set.

<b>VN</b>	<b>VIETNAM</b>
-----------	----------------

## 2704 / TABLE SAW 255MM

Item	Sub	Parts No.	Parts Description	Qty	I/C	E/C No.	Close No.	Remark
111		922116-0	HEX. SOCKET HEAD BOLT M4X12	1				
112		252130-5	HEX. LOCK NUT M10-17	1				
113		941251-5	FLAT WASHER 10	2				
114		911223-4	PAN HEAD SCREW M5X16	4				
115		345539-9	HANDLE PLATE HOLDER	1				
116		345534-9	HANDLE PLATE	1				
117		257161-9	RING 4	1				
118		941051-3	FLAT WASHER 4	1				
119		922116-0	HEX. SOCKET HEAD BOLT M4X12	1				
120		257753-4	SLEEVE 10	1				
121		265536-8	HEX.BOLT M10X60	1				
122		273523-3	GRIP	1				
123		265382-9	HEX. SOCKET HEAD BOLT M5X20	1				
124		324559-6	HOOK RING	1				
125		233229-5	COMPRESSION SPRING 8	1				
126		418655-1	ROD HOLDER	1				
127		418655-1	ROD HOLDER	1				
128		345535-7	JOINT PLATE	1				
130		922116-0	HEX. SOCKET HEAD BOLT M4X12	2				
131		922116-0	HEX. SOCKET HEAD BOLT M4X12	1				
132		941051-3	FLAT WASHER 4	1				
133		257161-9	RING 4	1				
134-1		324675-4	ROD JOINT	1				
135-1		324673-8	ROD R	1				
136-1		324674-6	ROD F	1				
137		911128-8	P.H.SCREW M4X16 WITH WR	2				
138		911128-8	P.H.SCREW M4X16 WITH WR	2				
140		922116-0	HEX. SOCKET HEAD BOLT M4X12	2				
141		922116-0	HEX. SOCKET HEAD BOLT M4X12	1				
142		941051-3	FLAT WASHER 4	1				
143		257161-9	RING 4	1				
144-1		324675-4	ROD JOINT	1				
145		911128-8	P.H.SCREW M4X16 WITH WR	2				
146		418655-1	ROD HOLDER	1				
147		911323-0	PAN HEAD SCREW M6X16	2				
148		687049-3	STRAIN RELIEF	1				
149		251308-7	+ PAN HEAD SCREW M4X10	1				
150		664094-5	POWER SUPPLY CORD 1.5-5-0.5	1				
151		345628-0	PLATE	1				
152		416333-7	RACK PLATE	1				
153		911213-7	PAN HEAD SCREW M5X12	2				
154		418655-1	ROD HOLDER	1				
155		233229-5	COMPRESSION SPRING 8	1				
156		324559-6	HOOK RING	1				
157		265382-9	HEX. SOCKET HEAD BOLT M5X20	1				
158		911128-8	P.H.SCREW M4X16 WITH WR	2				
159-1		318020-3	ADJUST BLOCK	1				
160		344529-9	SLIDE SEAT	2				
161		232174-1	LEAF SPRING	2				
162		345535-7	JOINT PLATE	1				
163		416439-1	DUST GUIDE	1				
164		266034-5	TAPPING SCREW CT 4X16	2				
165-1		318253-0	FRAME	1				
166		418917-7	DUST JOINT	1				
167		266061-2	TAPPING SCREW BIND CT 4X8	2				
168		154599-8	FRAME COVER COMPLETE	1				
169		911114-9	PAN HEAD SCREW M4X10	1				
170		911333-7	PAN HEAD SCREW M6X20	4				
171		416332-9	FRAME RETAINER	2				
172		265460-5	HEX. BOLT M6X20	2				
174		266300-0	TAPPING SCREW 4X18	2				
175		413097-4	SLIDE COVER	1				
176		266035-3	TAPPING SCREW BIND CT 5X12	4				
177		418918-5	SWITCH BOX	1				
178		682511-3	GROMMET	1			C3150	

Interchange  
O : Yes  
X : No  
< : the new part can be substituted for the current.  
> : the current part can be substituted for the new.  
S : Interchangeable as a set.

<b>VN</b>	<b>VIETNAM</b>
-----------	----------------

### 2704 / TABLE SAW 255MM

Item	Sub	Parts No.	Parts Description	Qty	I/C	E/C No.	Close No.	Remark
178-1		682103-8	GROMMET	1	<	C3150		
179		265995-6	TAPPING SCREW 4X18	2			C7193	
179-1		265A48-7	TAPPING SCREW 4X18	2	O	C7193		
180		687054-0	STRAIN RELIEF	1				
181		418911-9	SWITCH BASE	1				
182		265995-6	TAPPING SCREW 4X18	2			C7193	
182-1		265A48-7	TAPPING SCREW 4X18	2	O	C7193		
183		265995-6	TAPPING SCREW 4X18	2			C7193	
183-1		265A48-7	TAPPING SCREW 4X18	2	O	C7193		
184		682511-3	GROMMET	1			C3150	
184-1		682103-8	GROMMET	1	<	C3150		
185		265995-6	TAPPING SCREW 4X18	2			C7193	
185-1		265A48-7	TAPPING SCREW 4X18	2	O	C7193		
186		687052-4	STRAIN RELIEF	1				
189		418909-6	SWITCH COVER	1				
190		266192-7	TAPPING SCREW 4X14	3				
191		816835-7	INNER SCALE PLATE	1				
192		251308-7	+ PAN HEAD SCREW M4X10	1				
193		911253-5	PAN HEAD SCREW M5X30	2				
194		418908-8	INNER RAIL END	1				
195		922146-1	HEX. SOCKET HEAD BOLT M4X25	1				
196		154596-4	FRONT OUTER RAIL COMPLETE	1				
	C10	816834-9	OUTER SCALE PLATE	1				
199		317877-9	SUB TABLE	1				
200		158952-0	TABLE COMPLETE	1				
	C10	346068-5	PLATE	1				
	C20	911118-1	PAN HEAD SCREW M4X12	2				
201		922126-7	HEX. SOCKET HEAD BOLT M4X16	1				
202-1		158104-3	FRONT INNER RAIL COMPLETE	1				
203		911233-1	PAN HEAD SCREW M5X20	4				
206		418907-0	OUTER RAIL END	1				
207		265045-7	+ PAN HEAD SCREW M5X18	2				
208		125279-3	CENTER COVER ASS'Y	1			C1057	
	D10		INC. 211,212				C1057	
208-1		126901-5	CENTER COVER ASSEMBLY	1	O	C1057		
	D10		INC. 211,212			C1057		
211		317875-3	CENTER COVER	1			C1057	
211-1		319717-7	CENTER COVER	1	O	C1057		
212		266264-8	H.S.SET SCREW(FLAT POINT)M5X6	4				
214		418907-0	OUTER RAIL END	1				
215		911233-1	PAN HEAD SCREW M5X20	4				
216		317867-2	REAR OUTER RAIL	1				
217		345529-2	RAIL STOPPER	1				
218		251308-7	+ PAN HEAD SCREW M4X10	1				
220		922126-7	HEX. SOCKET HEAD BOLT M4X16	1				
221-1		158103-5	REAR INNER RAIL COMPLETE	1				
222		345533-1	BASE FRONT COVER	1				
223-1		266192-7	TAPPING SCREW 4X14	4				
225		911253-5	PAN HEAD SCREW M5X30	2				
226		922146-1	HEX. SOCKET HEAD BOLT M4X25	1				
227		418908-8	INNER RAIL END	1				
228		286212-1	CAP 20	4				
229		154608-3	BASE COMPLETE	1				
	C10	810107-2	CAUTION LABEL	1				
	C20	819176-0	MAKITA LOGO PLATE	3				
230		265995-6	TAPPING SCREW 4X18	2			C7193	
230-1		265A48-7	TAPPING SCREW 4X18	2	O	C7193		
231		687052-4	STRAIN RELIEF	1				
232		682516-3	CORD GUARD 9.3-85	1			C7643	
232-1		682504-0	CORD GUARD 10-85	1	O	C7643		
233		665865-3	POWER SUPPLY CORD 1.0-2-2.5	1				
234		931302-2	HEX. NUT M6	2				
235		271318-8	KNOB 37	2				
236		941151-9	FLAT WASHER 6	2				
237		921342-8	HEX. BOLT M6X25	2				

Interchange  
O : Yes  
X : No  
< : the new part can be substituted for the current.  
> : the current part can be substituted for the new.  
S : Interchangeable as a set.

<b>VN</b>	<b>VIETNAM</b>
-----------	----------------

## 2704 / TABLE SAW 255MM

Item	Sub	Parts No.	Parts Description	Qty	I/C	E/C No.	Close No.	Remark
238		271320-1	KNOB 37	1				
239		252197-3	HEX.NUT M14	1				
240		421926-7	HOLDER	1				
241		931402-8	HEX. NUT M8	1				
242		253797-2	FLAT WASHER 14	1				
243		265537-6	HEX.BOLT M14X65	1				
244		921462-8	HEX. BOLT M8X40	1				
245		861373-4	2704 NAME PLATE	1				
246		911344-2	PAN HEAD SCREW M6X25	4				
250		256769-6	PIN 6	1				
251		317872-9	ANGLE RAIL	1				
252		266378-3	H.S.SET SCREW M5X5	2				
253		345523-4	ANGLE STOPPER	1				
254		324530-0	SCALE PIN	1				
255		911138-5	P.H.SCREW M4X20 WITH WR	3				
256		931102-0	HEX. NUT M4	3				
258		273524-1	GRIP 28	1				
259		922333-2	HEX.SOCKET HD BOLT M6X20	4				
260		317897-3	RULER	1				
263		911108-4	PAN HEAD SCREW M4X8	2				
264		418945-2	LENS	1				
265		418943-6	COVER	1				
266-1		154699-4	RULE HOLDER COMPLETE	1				
	C10	816836-5	INDICATION LABEL	1				
268		418948-6	SQUARE GUIDE	1				
269		265954-0	TAPPING SCREW BIND PT3X8	1				
270		231485-1	COMPRESSION SPRING 4	1				
271		418947-8	RULE HOLDER GUIDE	1				
272		231485-1	COMPRESSION SPRING 4	1				
273-1		345560-8	LOCK PLATE	1				
274		265155-0	+PAN HEAD SCREW M5X25	1				
275		418946-0	LEVER	1				
276		231297-2	COMPRESSION SPRING 9	1				
277		418944-4	LOCK LEVER	1				
278		253874-0	FLAT WASHER 4	1				
279		266020-6	TAPPING SCREW 4X12	1				
280		911133-5	PAN HEAD SCREW M4X18	4				
281		911238-1	PAN HEAD SCREW M5X22	2				
282		345566-6	HANDLE CAM	1				
283		345559-3	HANDLE CAM SUPPORT	1			C2000	
283-1		140D16-8	HANDLE CAM SUPPORT COMPLETE	1	X	C2000		
	C10	345559-3	HANDLE CAM SUPPORT	1		C2000		
	D10		INC. 282,284,285,287-289			C2000		
284		256029-6	PIN 8	1				
285		256200-2	PIN 5	1				
286		911118-1	PAN HEAD SCREW M4X12	4				
287		345564-0	LOCK PLATE STAY	1				
288		256200-2	PIN 5	1				
289		345565-8	HOOK JOINT	1				
290		265154-2	+P.H.SCREW M5X655	1				
291		324555-4	NUT M5	1				
292		256262-0	PIN 5	1				
293		345562-4	RULER TOP CONNECTER	1				
294		256262-0	PIN 5	1				
295		231683-7	TORSION SPRING 8	1				
296		313123-8	RULER TOP	1				
297		345563-2	RULER TOP GUIDE	1				
298		911118-1	PAN HEAD SCREW M4X12	2				
299		911118-1	PAN HEAD SCREW M4X12	3				
300		345561-6	RULER TOP SUPPORT	1			C2000	
300-1		140D15-0	RULER TOP SUPPORT COMPLETE	1	X	C2000		
	C10	345561-6	RULER TOP SUPPORT	1		C2000		
	D10		INC. 291-295,297,301			C2000		
301		256262-0	PIN 5	1				
302-1		317895-7	RULER TOP HOLDER	1				

Interchange  
O : Yes  
X : No  
< : the new part can be substituted for the current.  
> : the current part can be substituted for the new.  
S : Interchangeable as a set.

